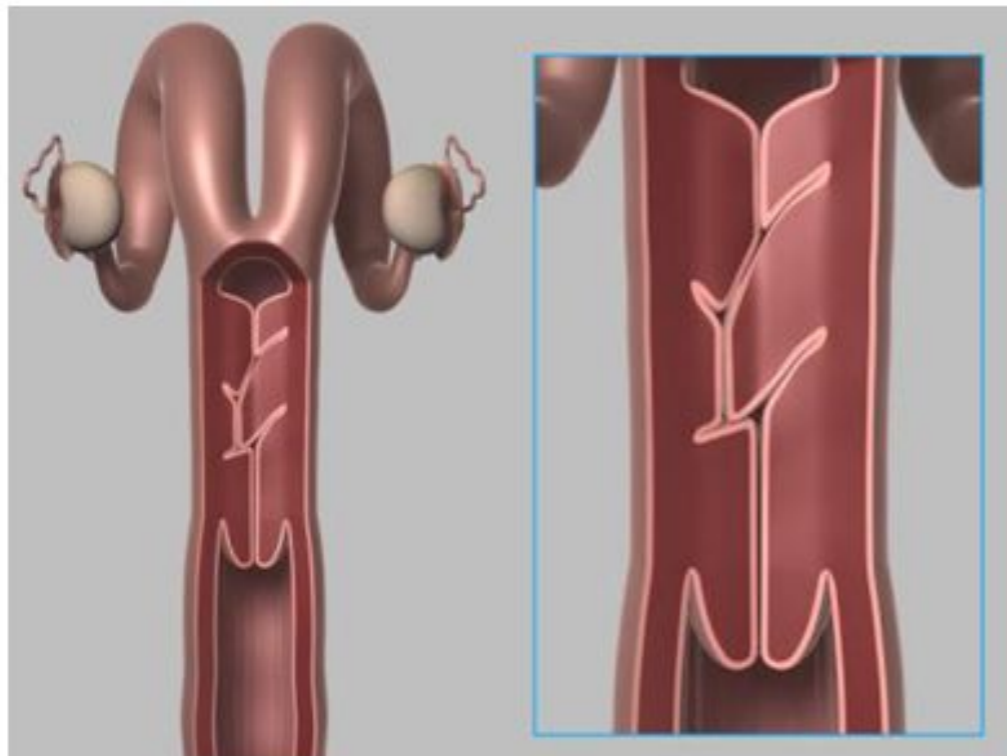
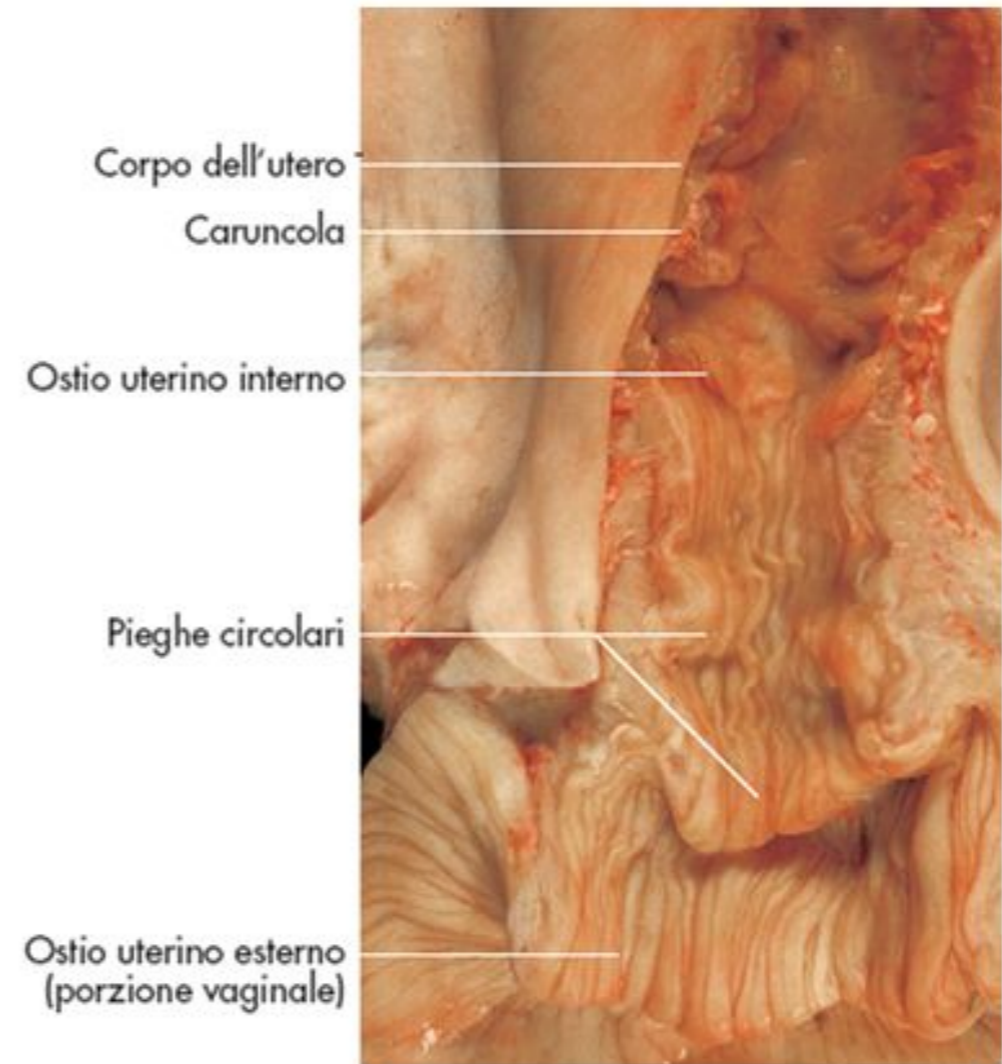
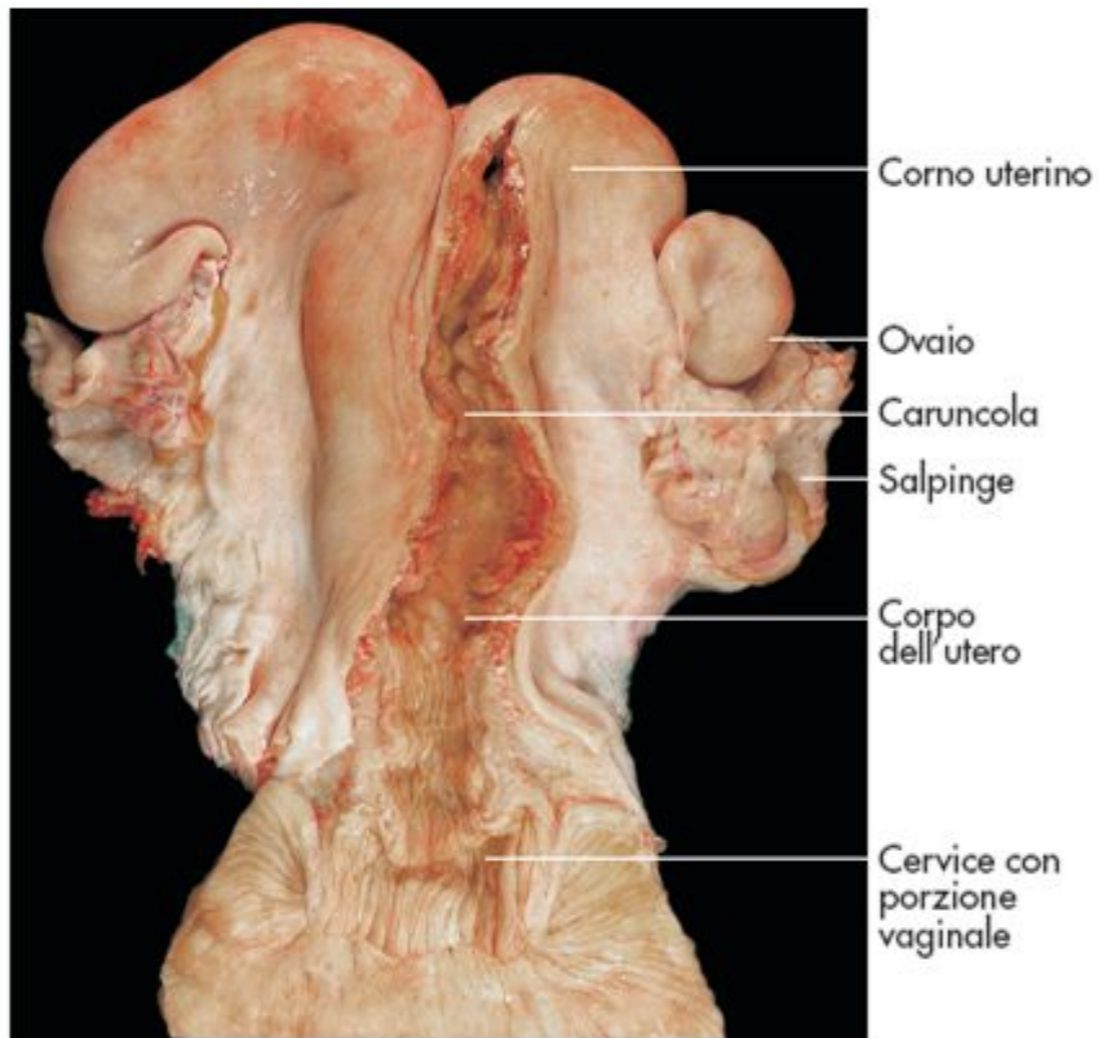


APPARATO GENITALE FEMMINILE

Apparato genitale femminile

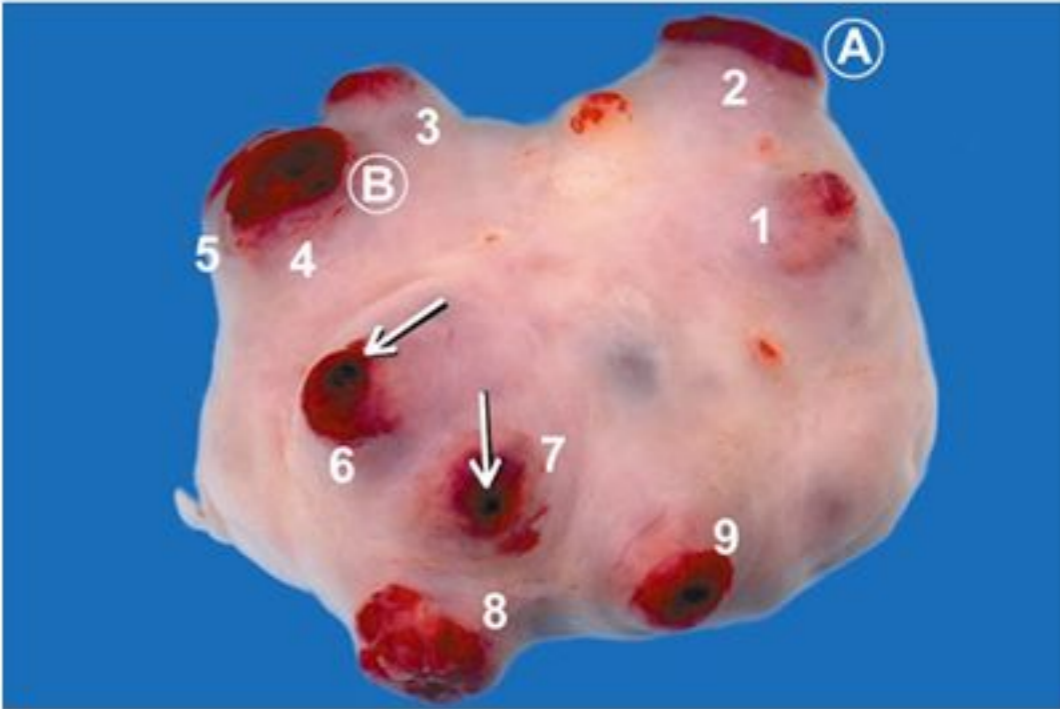
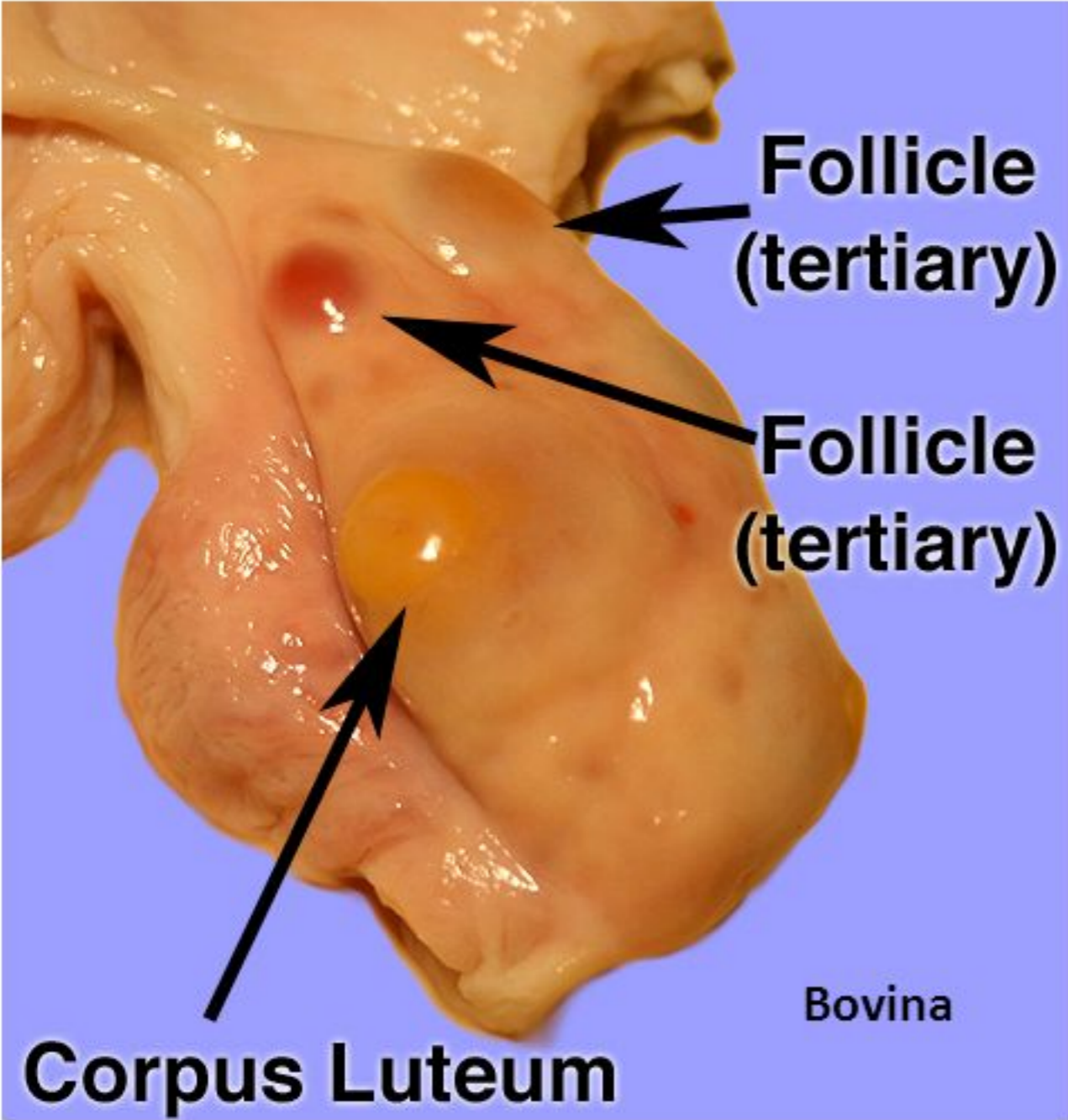
- **Ovaio** (*pari*) gonade femminile
(gameti+ormoni sessuali)
- **Tuba uterina** o **salpinge** (*pari*)
fecondazione
- **Utero** gestazione
- **Vagina** organo copulatore
- **Vulva e clitoride** genitali esterni



Nella **vacca** le pieghe del canale cervicale si presentano come **pieghe circolari** che si ingranano tra loro

Ovaio – *forma*

Nei ruminanti l'ovaio ha forma ovoidale



Borsa ovarica

Nei *ruminanti* e nella *scrofa* la borsa ovarica forma soltanto una sorta di cappuccio situato al di sopra dell'ovaio.

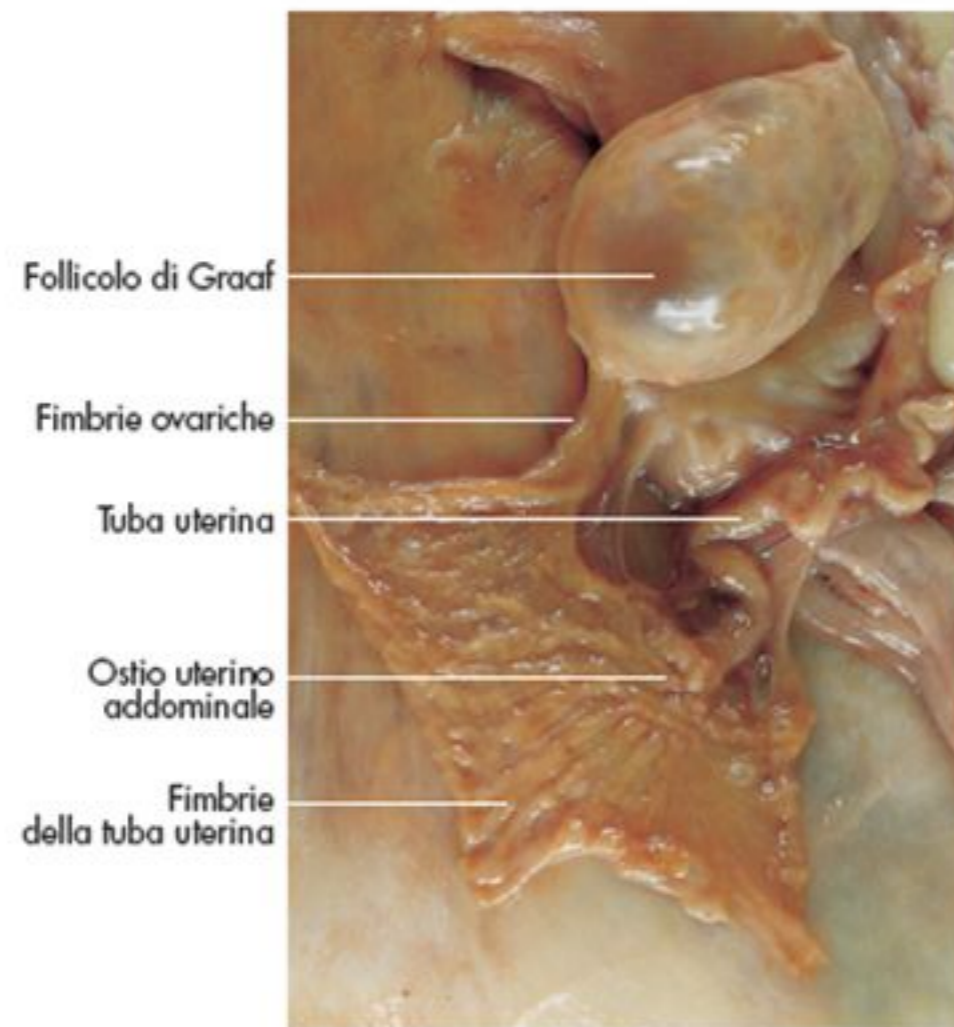


Fig. 11-18. Ovaio di vacca con tuba uterina.

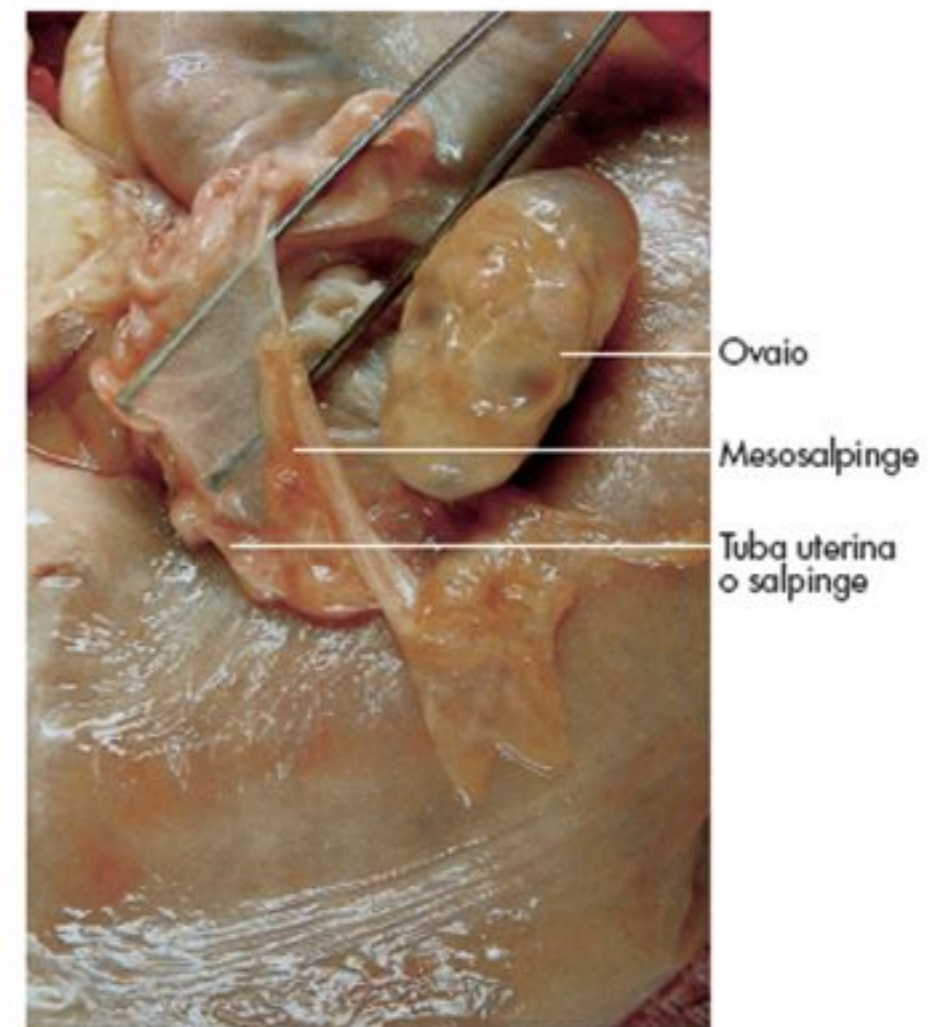
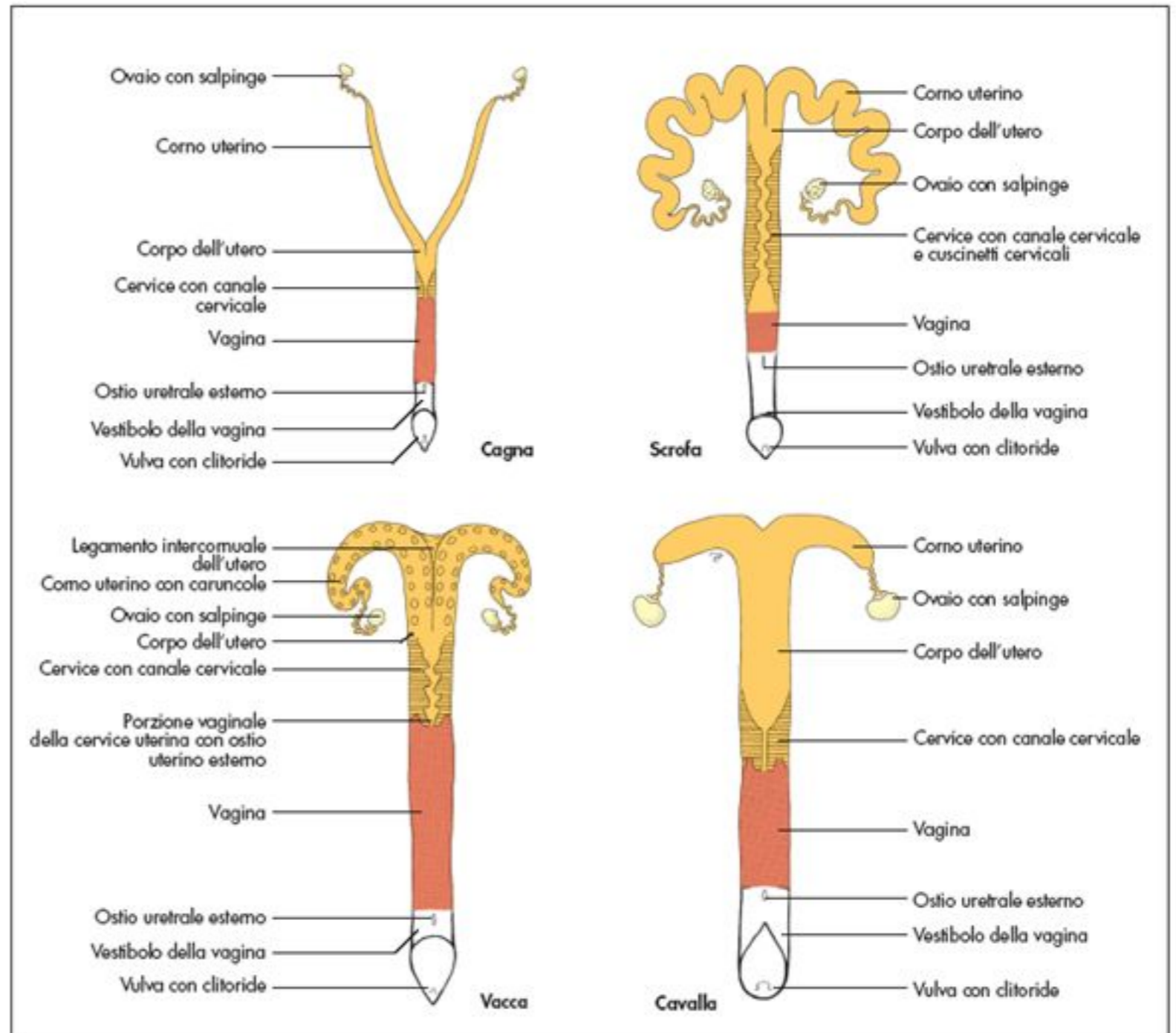


Fig. 11-19. Ovaio di vacca con evidenziazione della borsa ovarica.

Utero

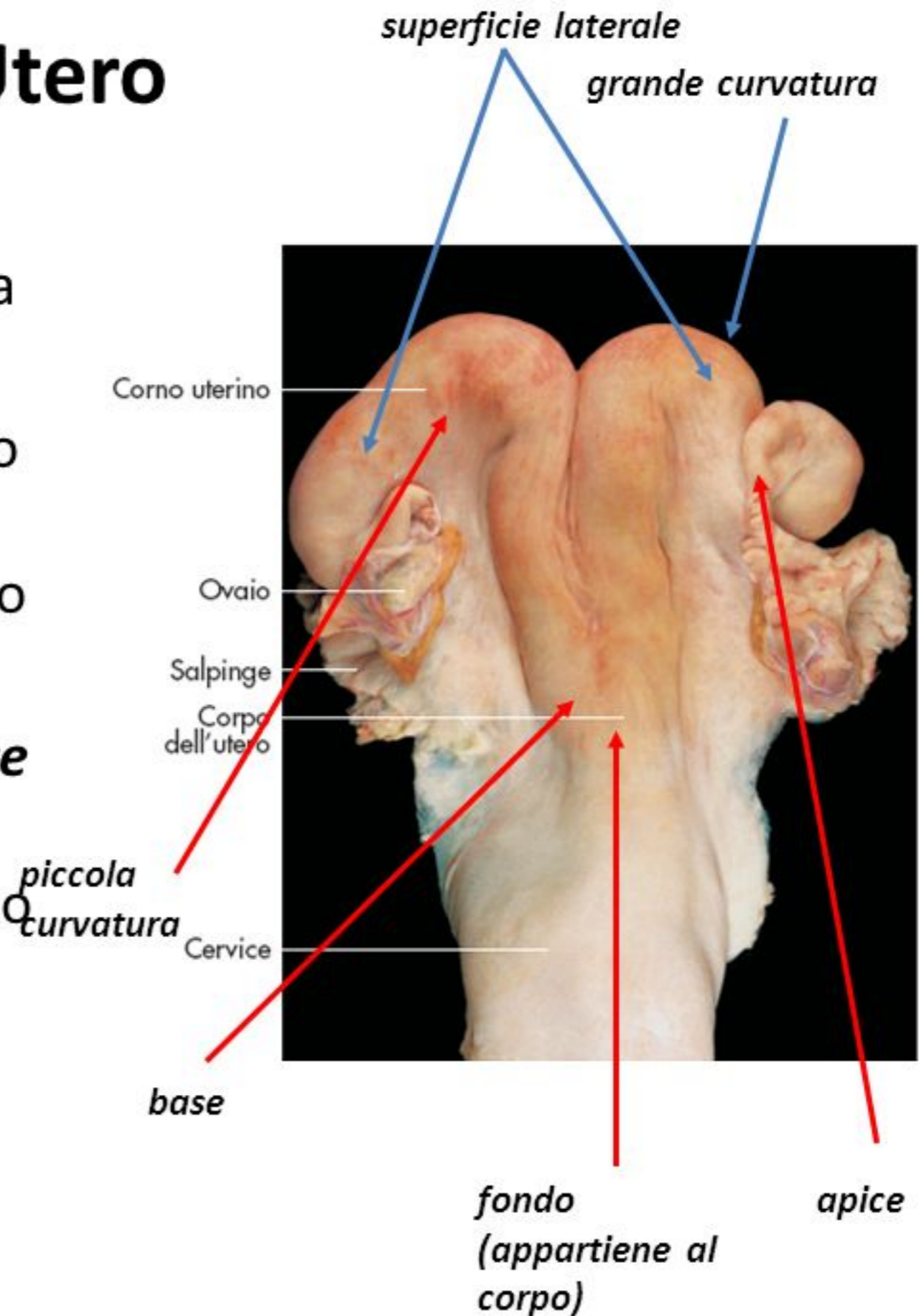
- Le **corni** si trovano in tutte le specie domestiche nella cavità addominale
- Possono essere rettilinee come nei **carnivori** (lunghe e sottili) o nella **cavalla** (relativamente corte e tozze) dove sono rivolte cranio-dorsalmente; simili alle anse intestinali come nella **scrofa**, ripiegate ventralmente a forma di corna di ariete nei **ruminanti**



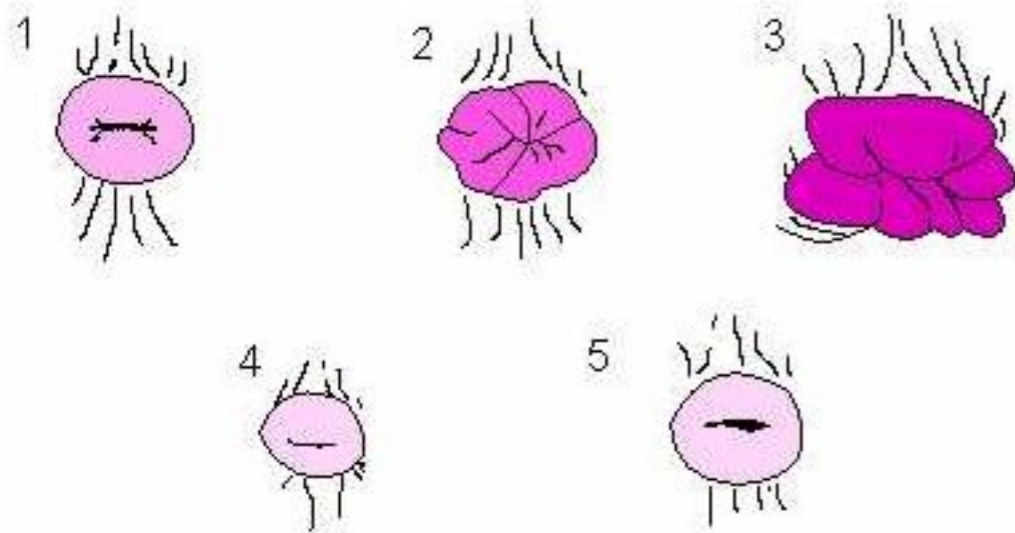
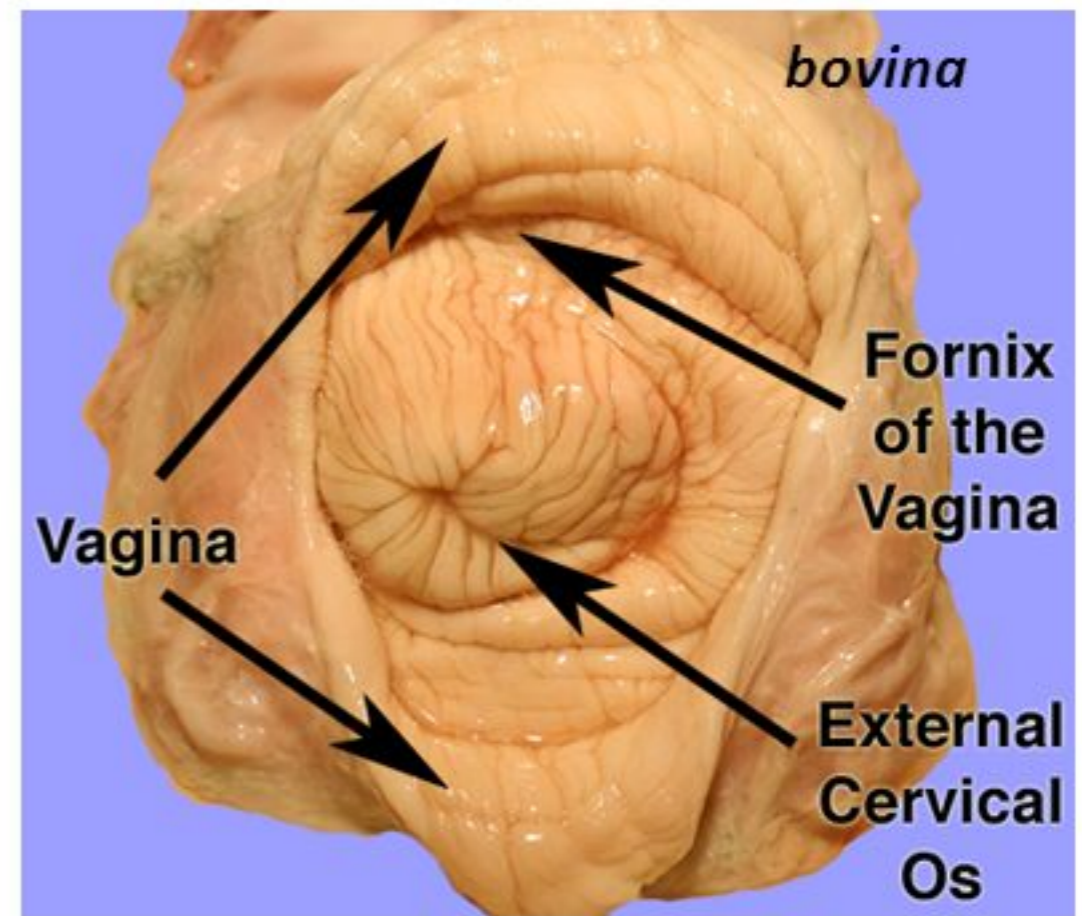
Utero

In ciascun corno si distinguono:

- una superficie laterale ed una mediale, libere
- un margine libero (ventrale) o **grande curvatura** e un margine legato al mesometrio (dorsale) o **piccola curvatura**
- una estremità craniale o **apice** ed una estremità caudale o **base** che si continua nel corpo a livello del *fondo* dell'utero



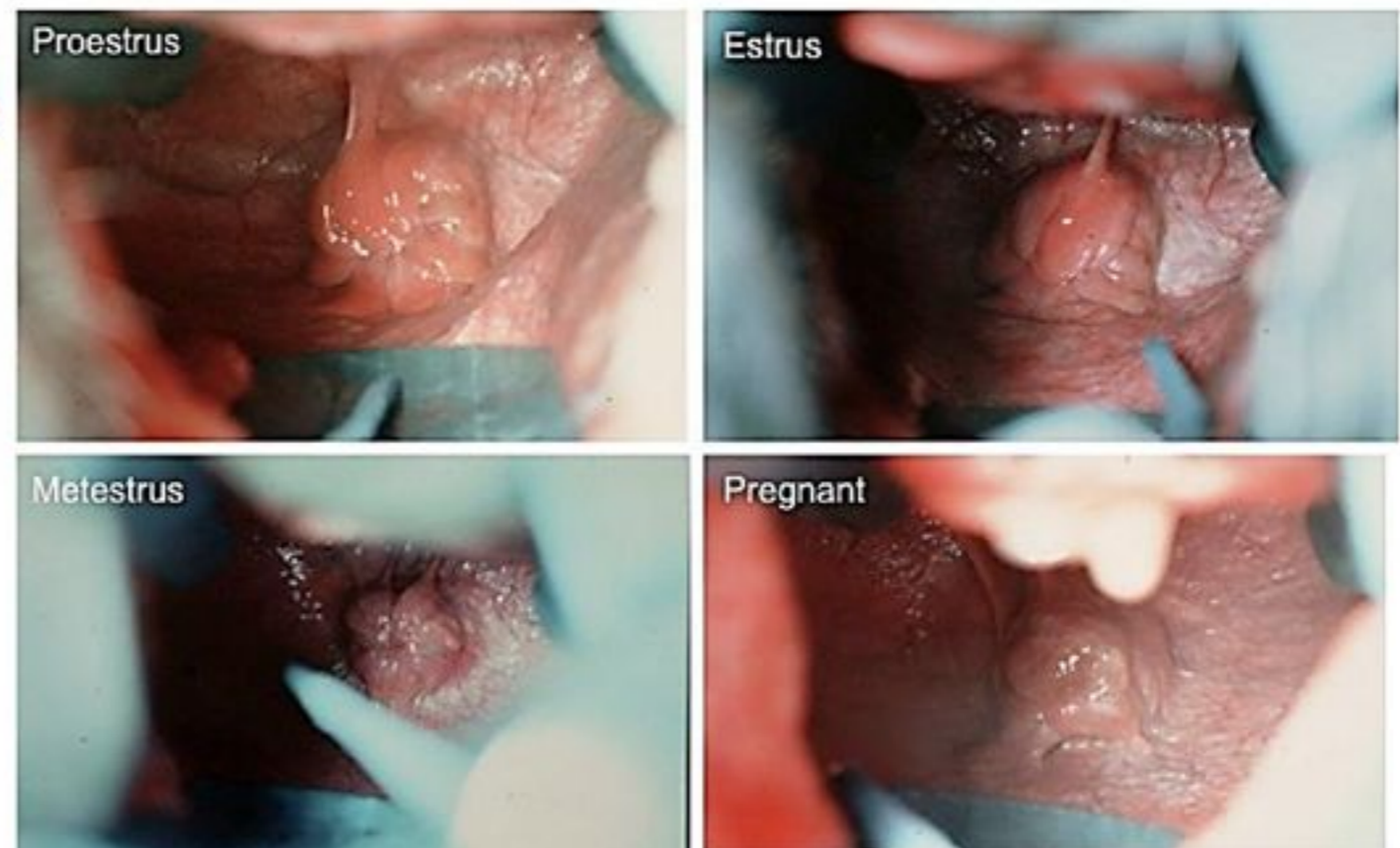
- Nella **bovina** e nella **cavalla** esiste una vera e propria **porzione vaginale della cervice** che sporge nettamente al fondo della vagina da cui è separata da un solco anulare detto **fornice vaginale**
- La porzione vaginale della cervice in questi animali presenta una superficie percorsa da numerose pieghe ad andamento irregolare molto evidenti



- 1 - Dioestrus
- 2 - Pro-oestrus
- 3 - Oestrus
- 4 - Pregnant
- 5 - Anoestrus

Note that the cervical canal is tightly closed during pregnancy and loose during oestrus.

cavalla



OVAIO

ANOMALIE DELLO SVILUPPO

Ermafroditismo



Ovaie sovranumerarie



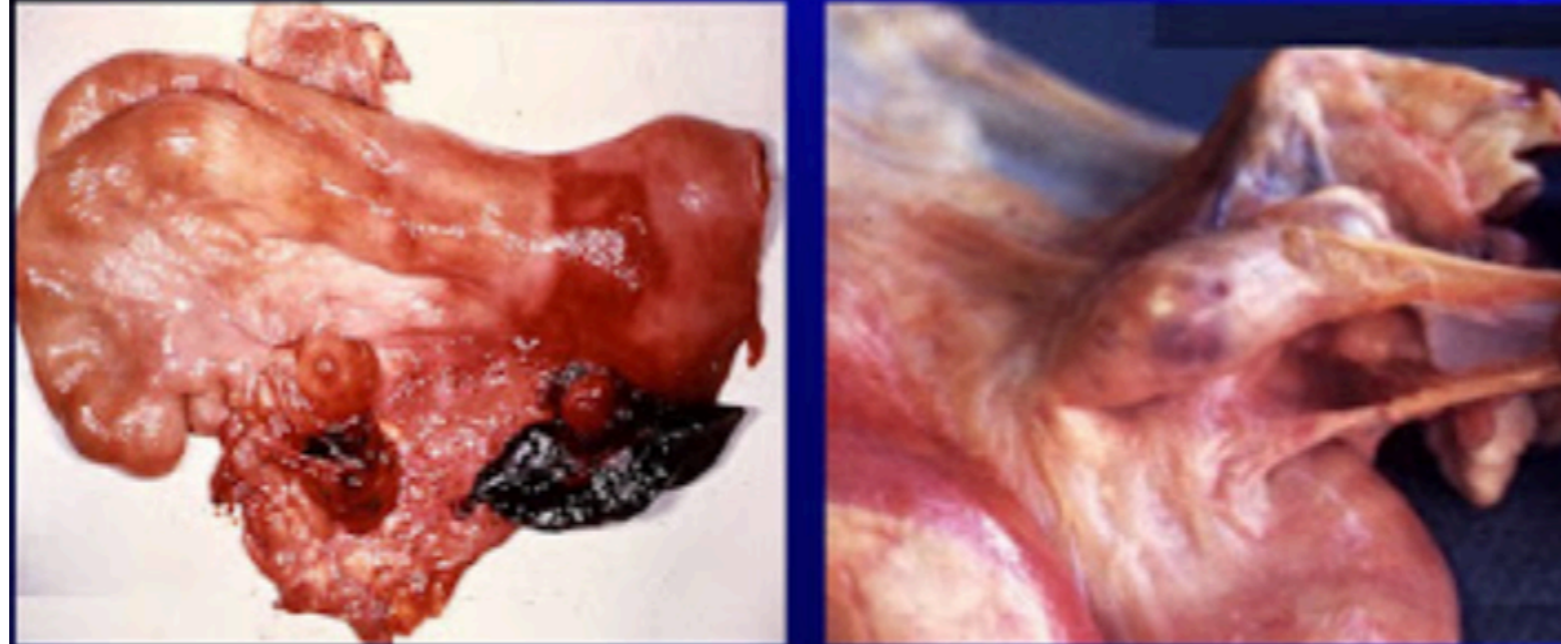
Agnesia ovarica

Ipoplasia ovarica



DISTURBO DI CIRCOLO

Emorragie parenchimatose



Ematomi periovarici

Emorragie follicolari

Emorragie Luteiniche

ALTERAZIONI DEGENERATIVE

ATRESIA

Follicolare

Senile

CISTI OVARICHE

CONGENITE
ACQUISITE

FOLLICOLARI



**CONGENITE
ACQUISITE**



CISTI OVARICHE

FOLLICOLARI E LUTEINICHE



CISTI DELLA RETE OVARI

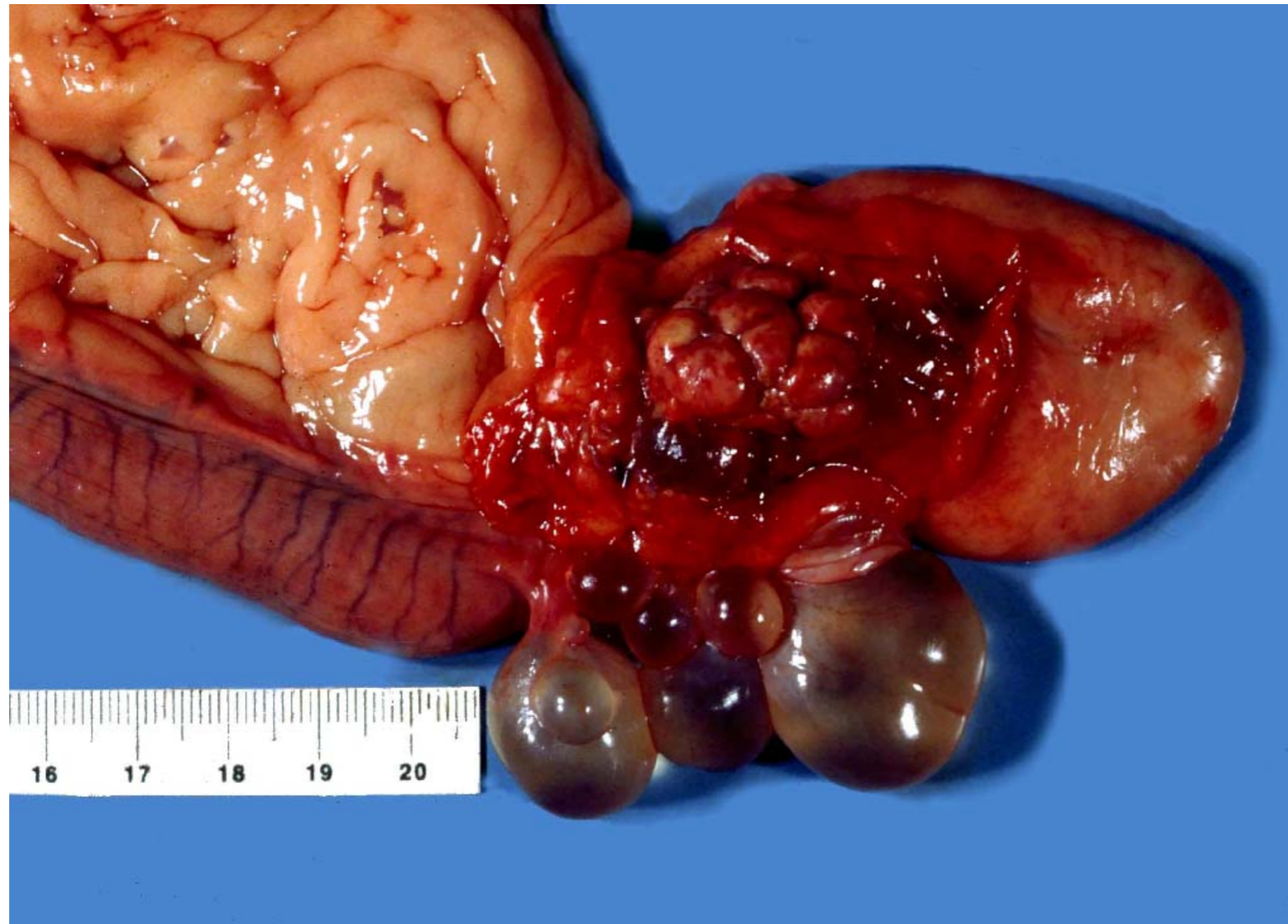


Cisti dei tubuli e dei dotti di Wolff (mesonefrici)



cisti da inclusione epiteliale

CISTI PARAOVARICHE

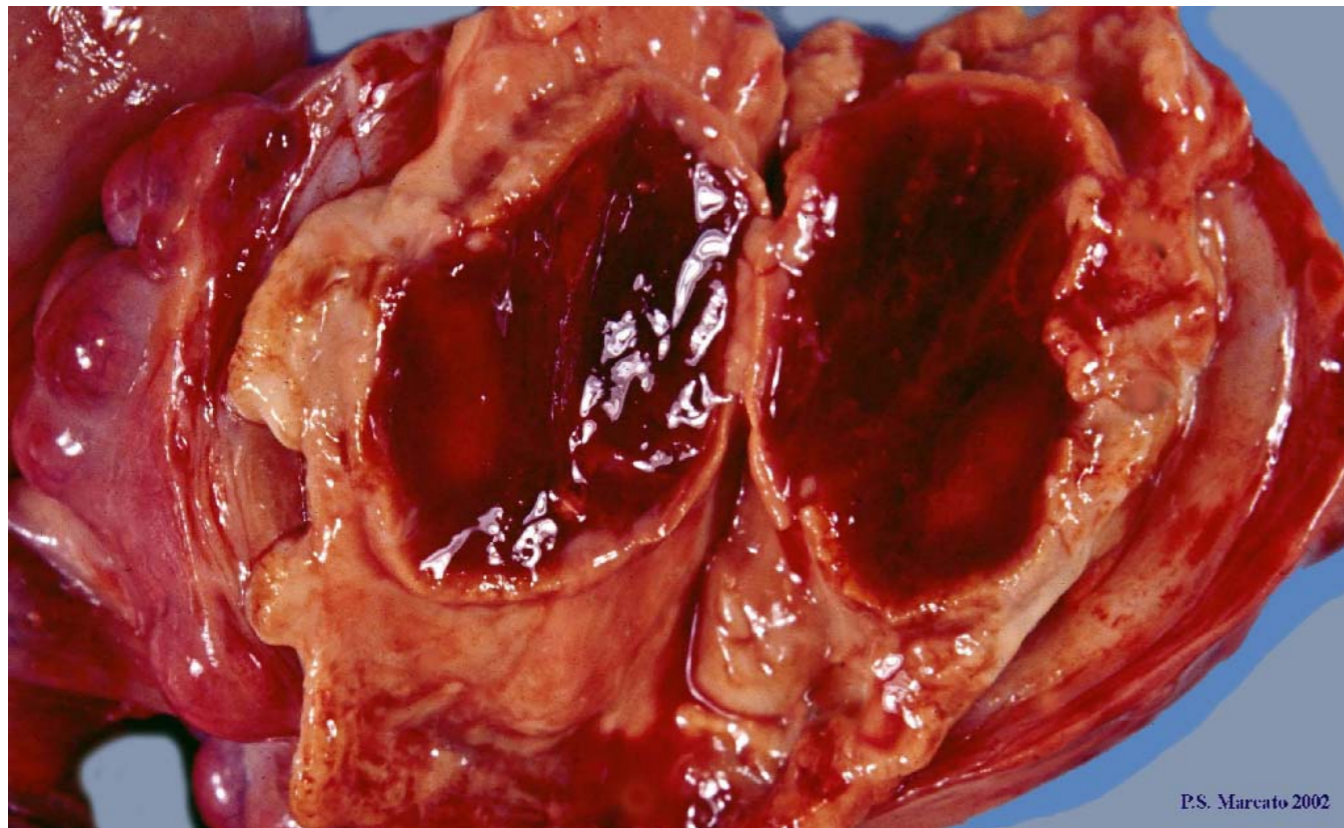
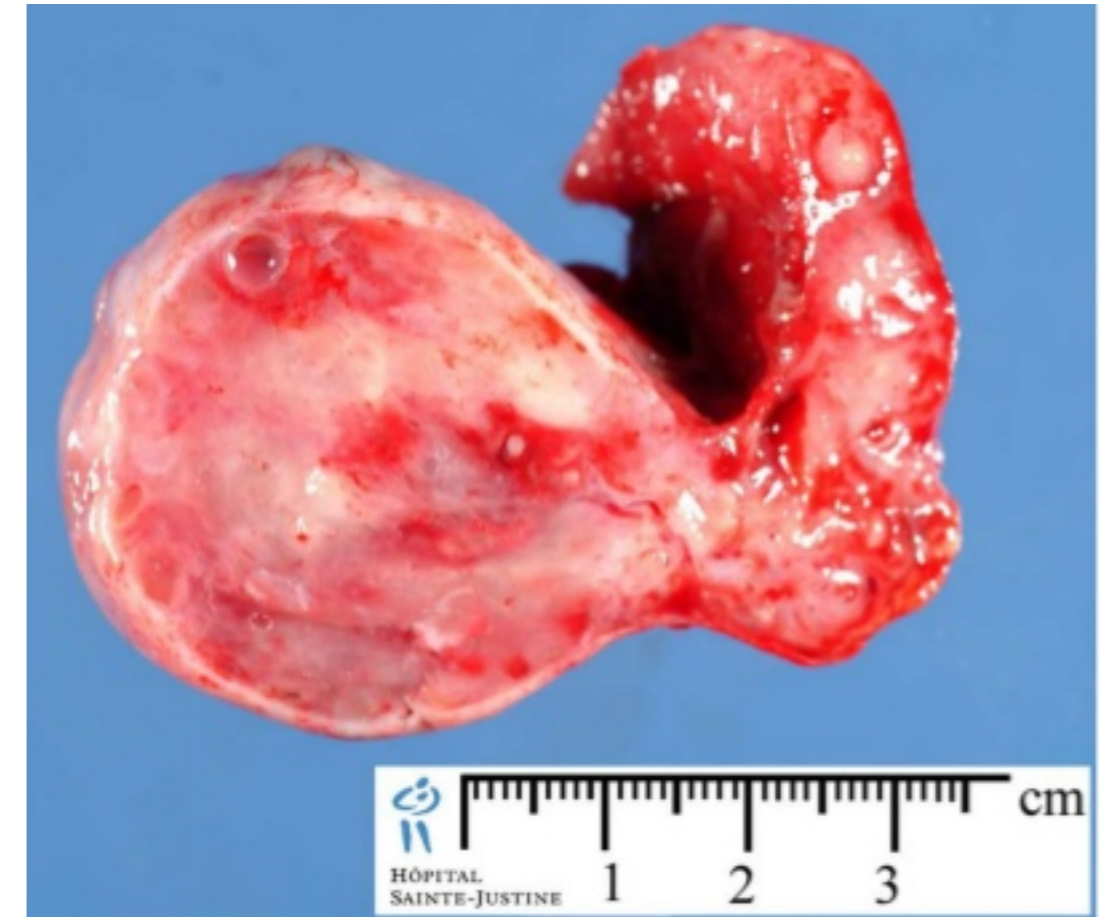


INFIAMMAZIONI

ooforiti (ovatiti)

ASPECIFICHE ACUTA (siero-fibrinoso o purulento-apostematoso)

PURULENTA



INFIAMMAZIONI

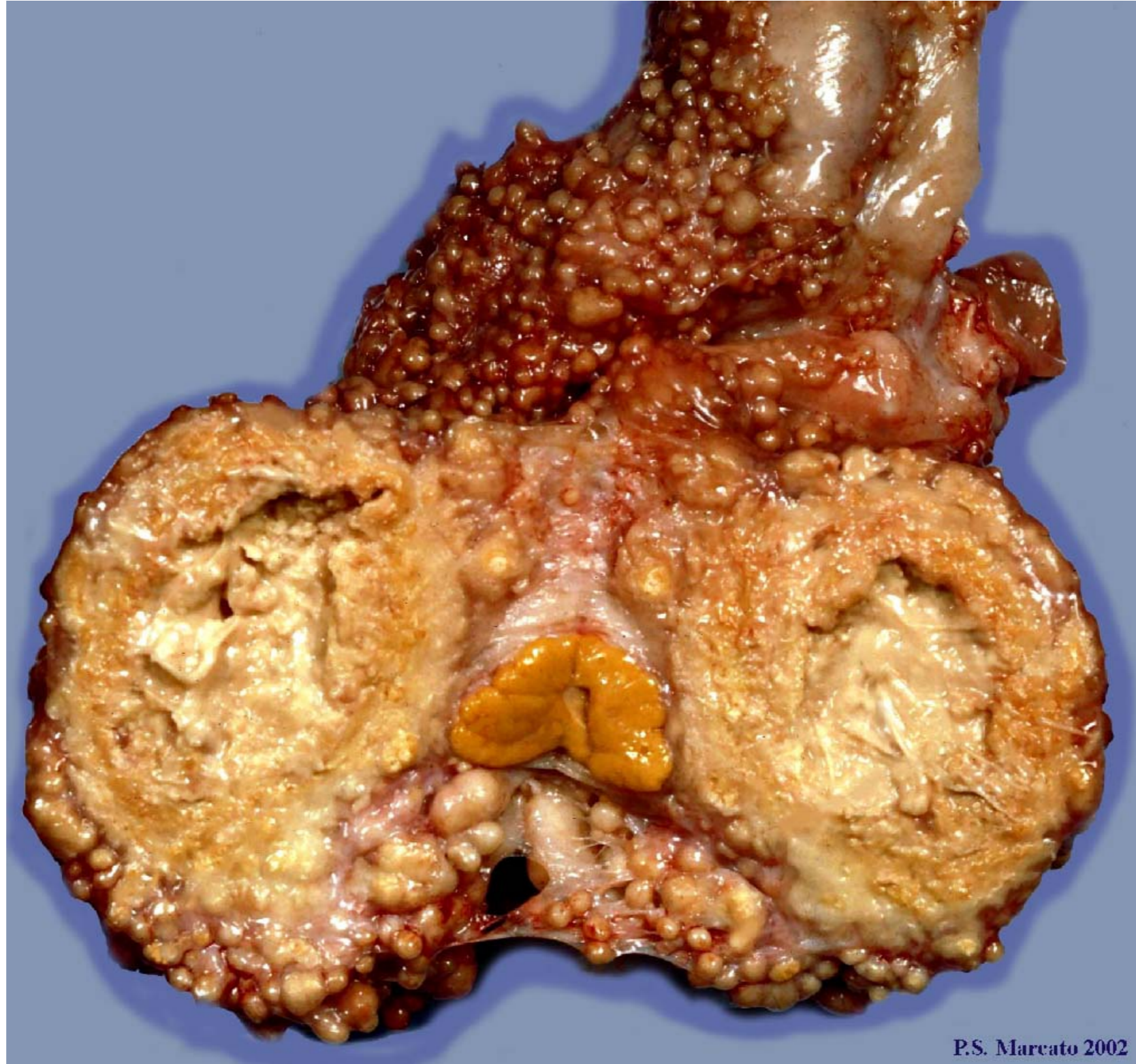
CRONICA

Ovaritis



SPECIFICHE

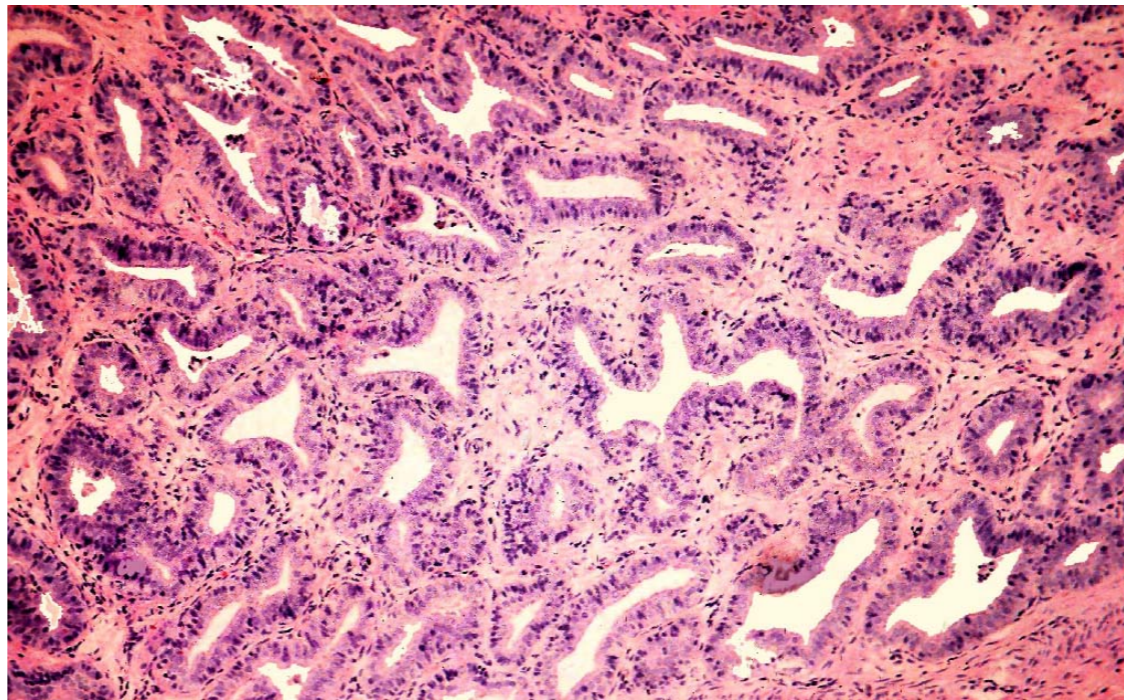
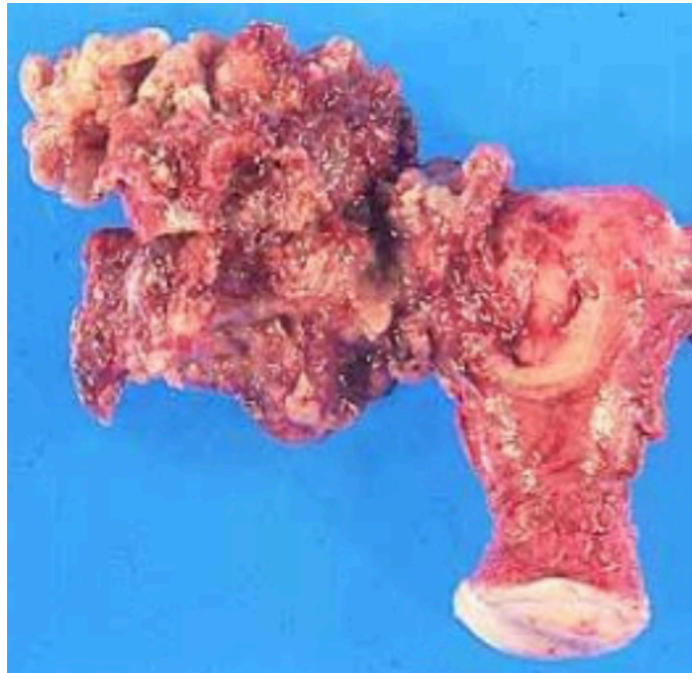
TBC



NEOPLASIE DELL'OVAIO

EPITELIALI

ADENOMA

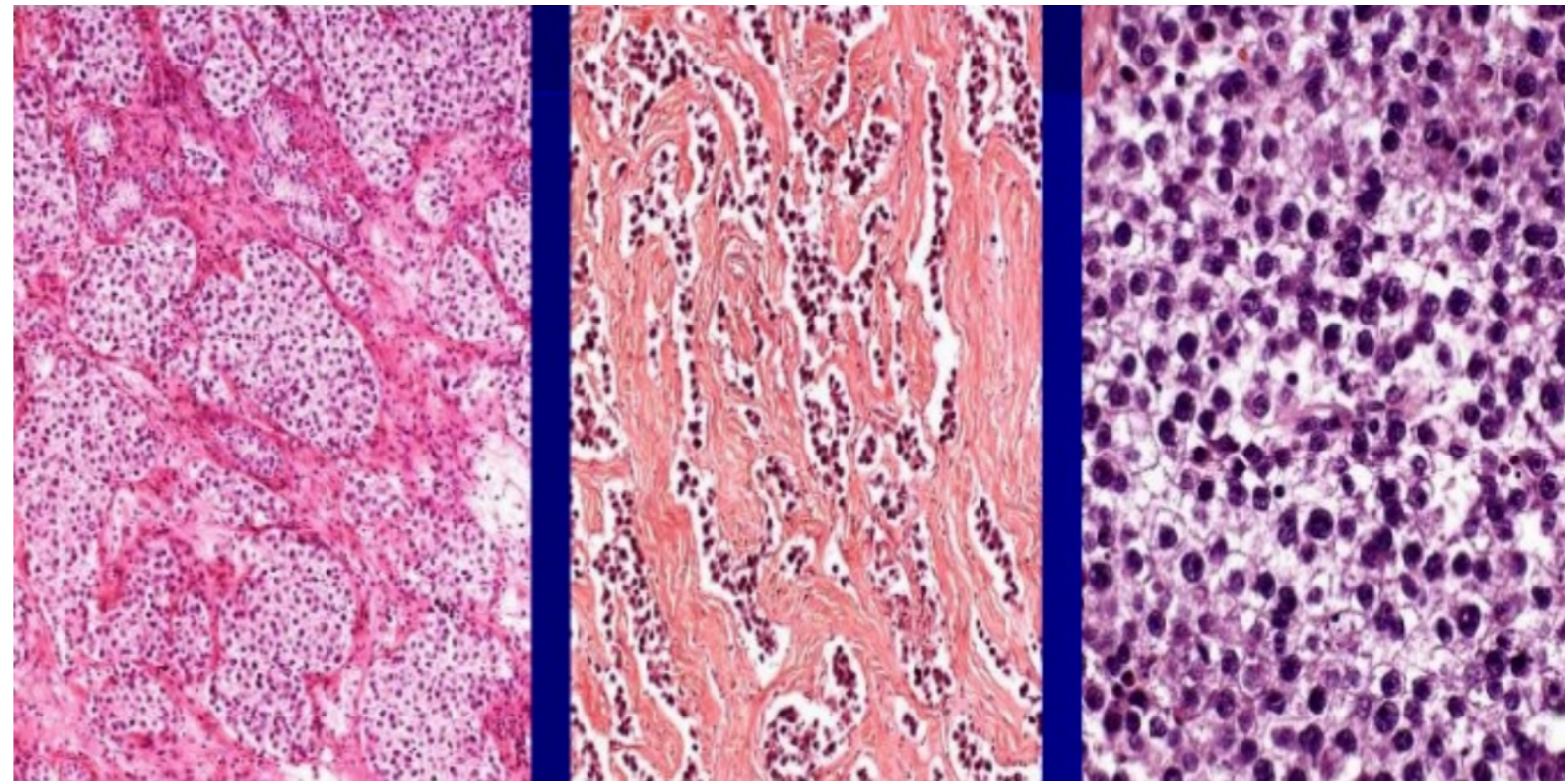
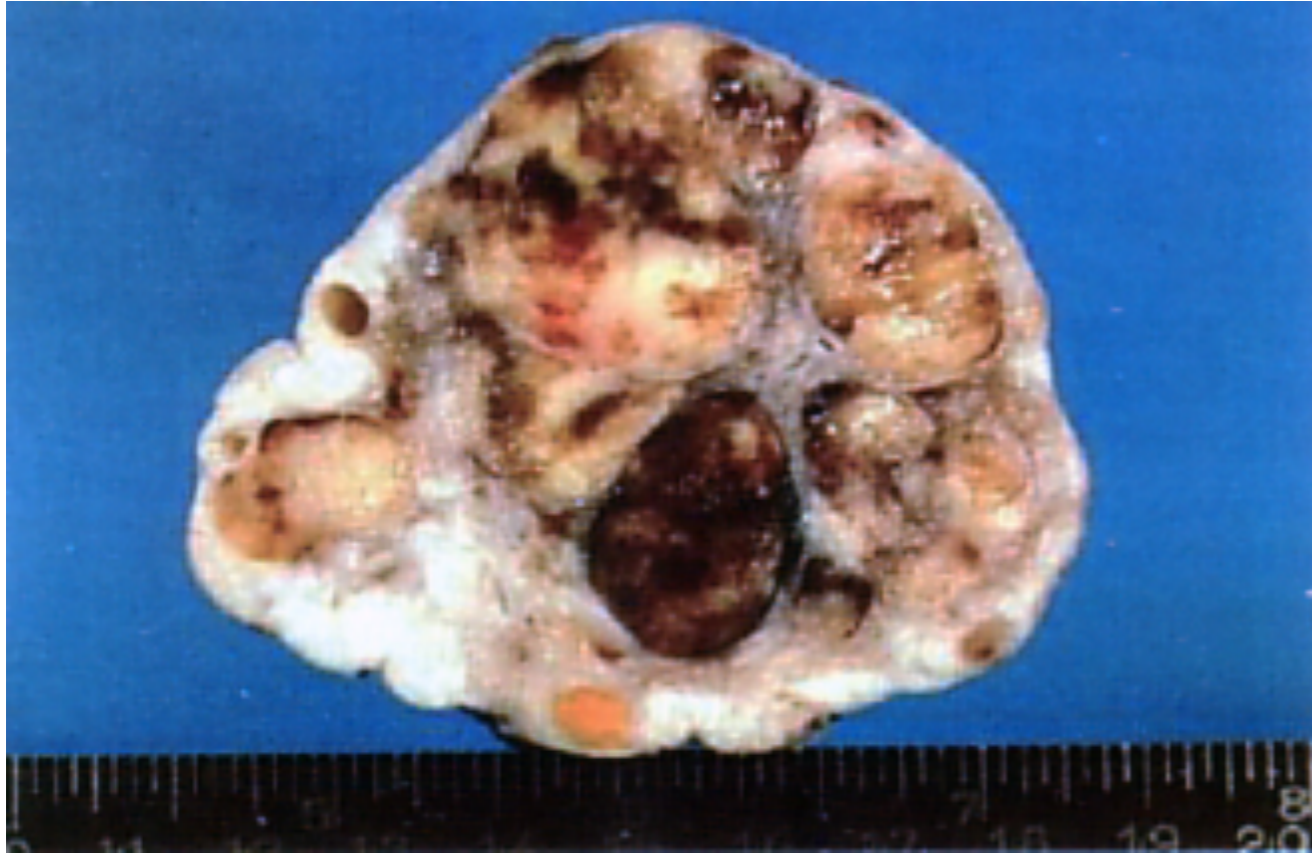


ADENOCARCINOMA



TUMORI DELLE CELLULE GERMINALI

DISGERMINOMA

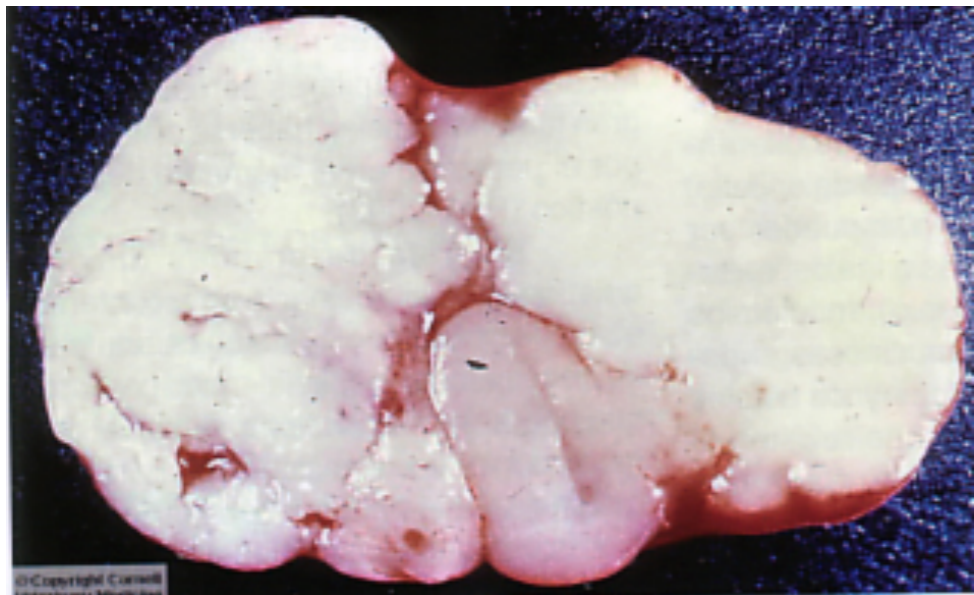
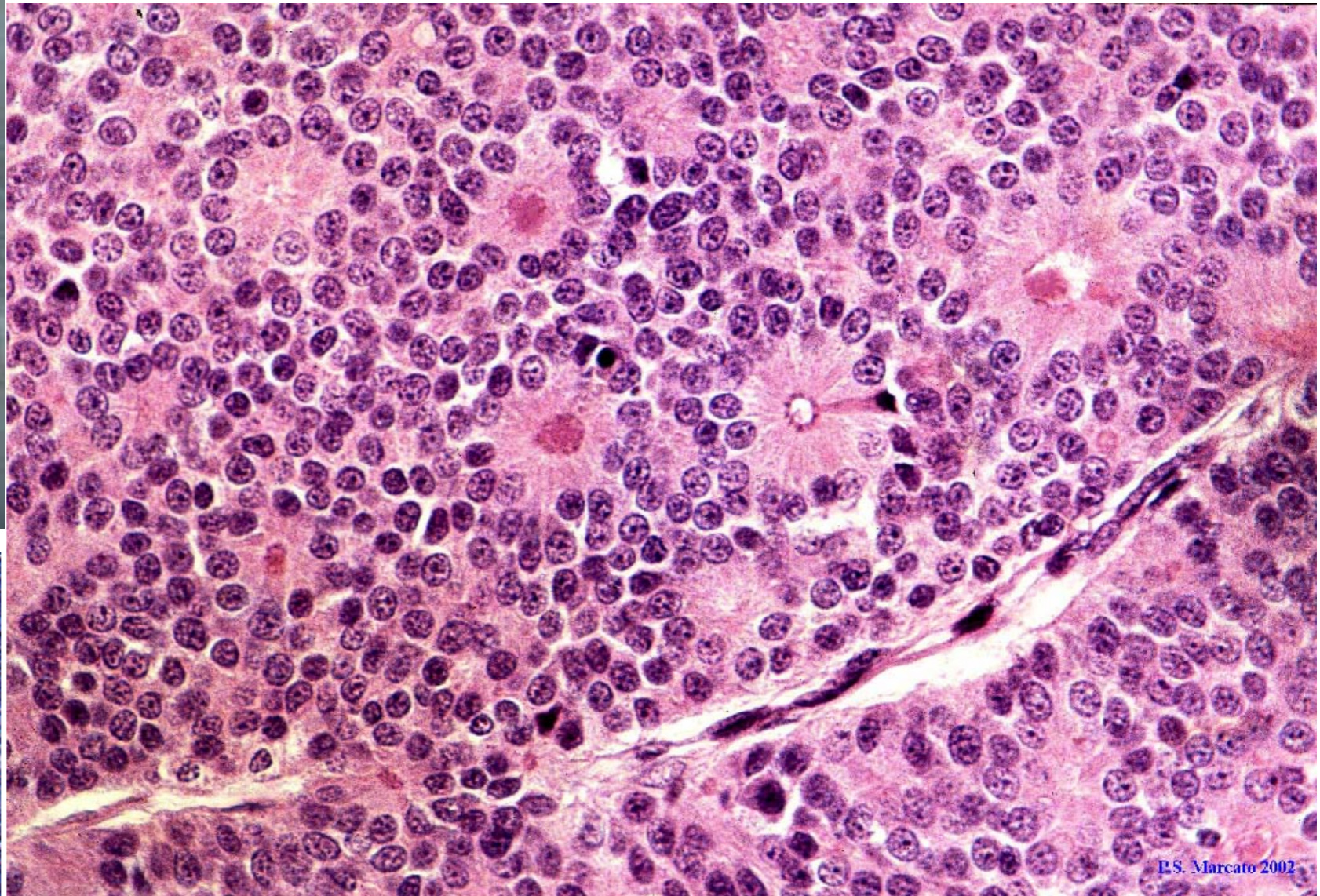


Teratoma



TUMORI GONADO STROMALI

Tumore cellula della granulosa



TECOMA

LUTEOMA

UTERO

ANOMALIE CONGENITE

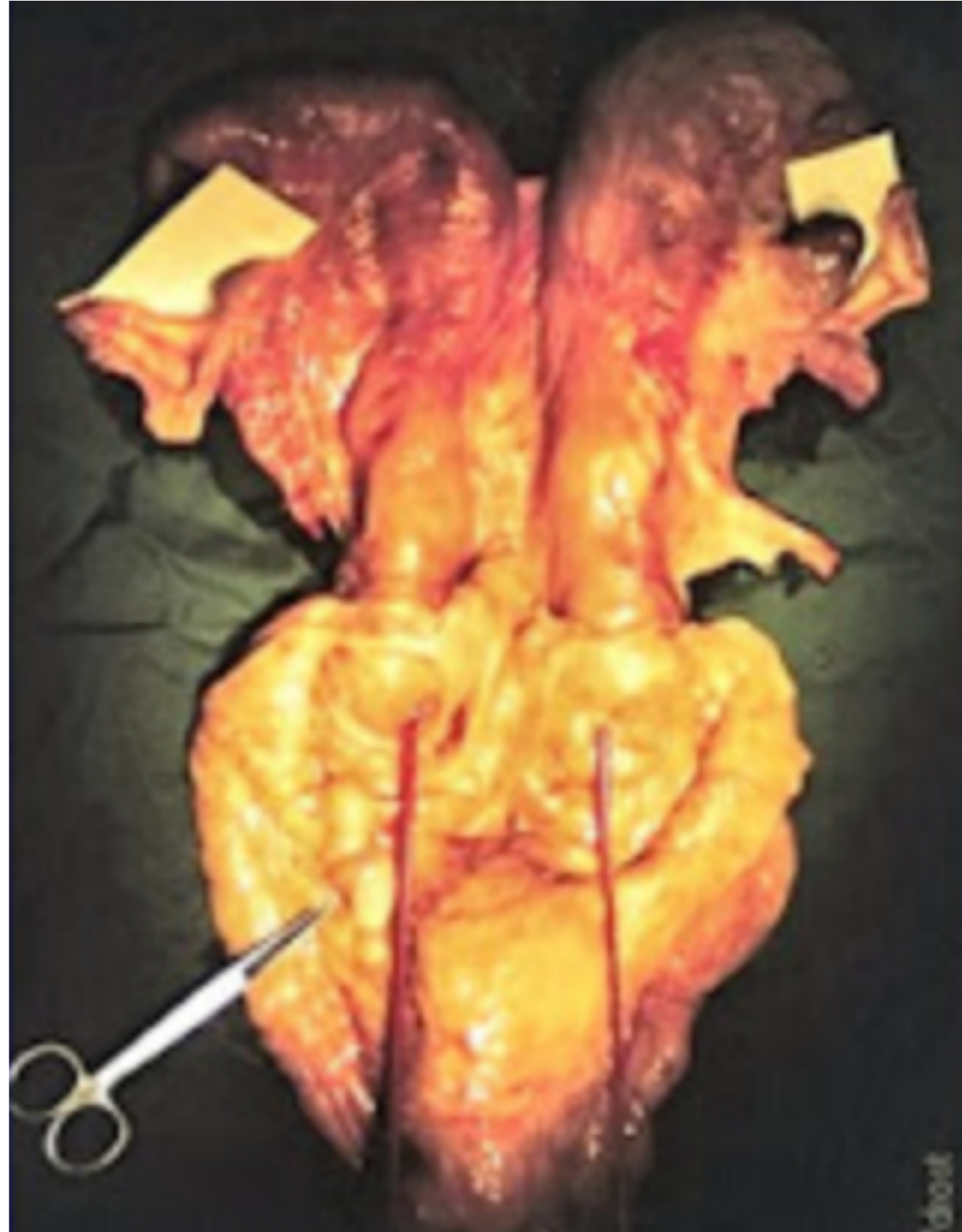
Aplasia segmentale



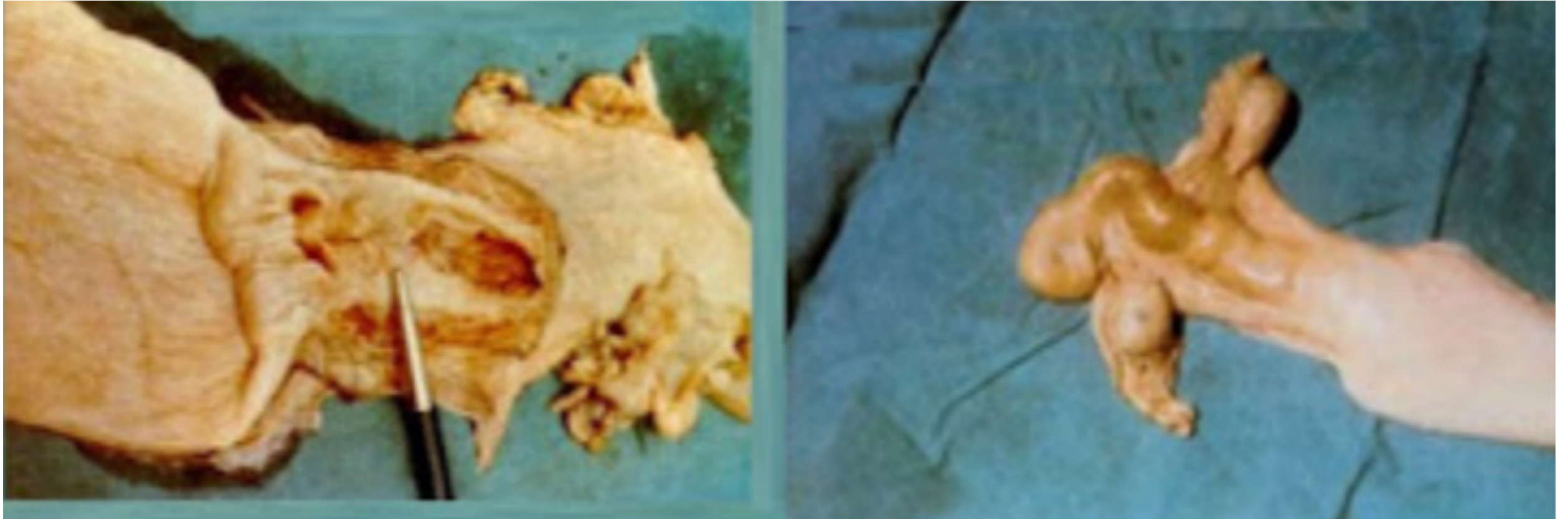
Utero monocorno



Utero duplice



Aplasia

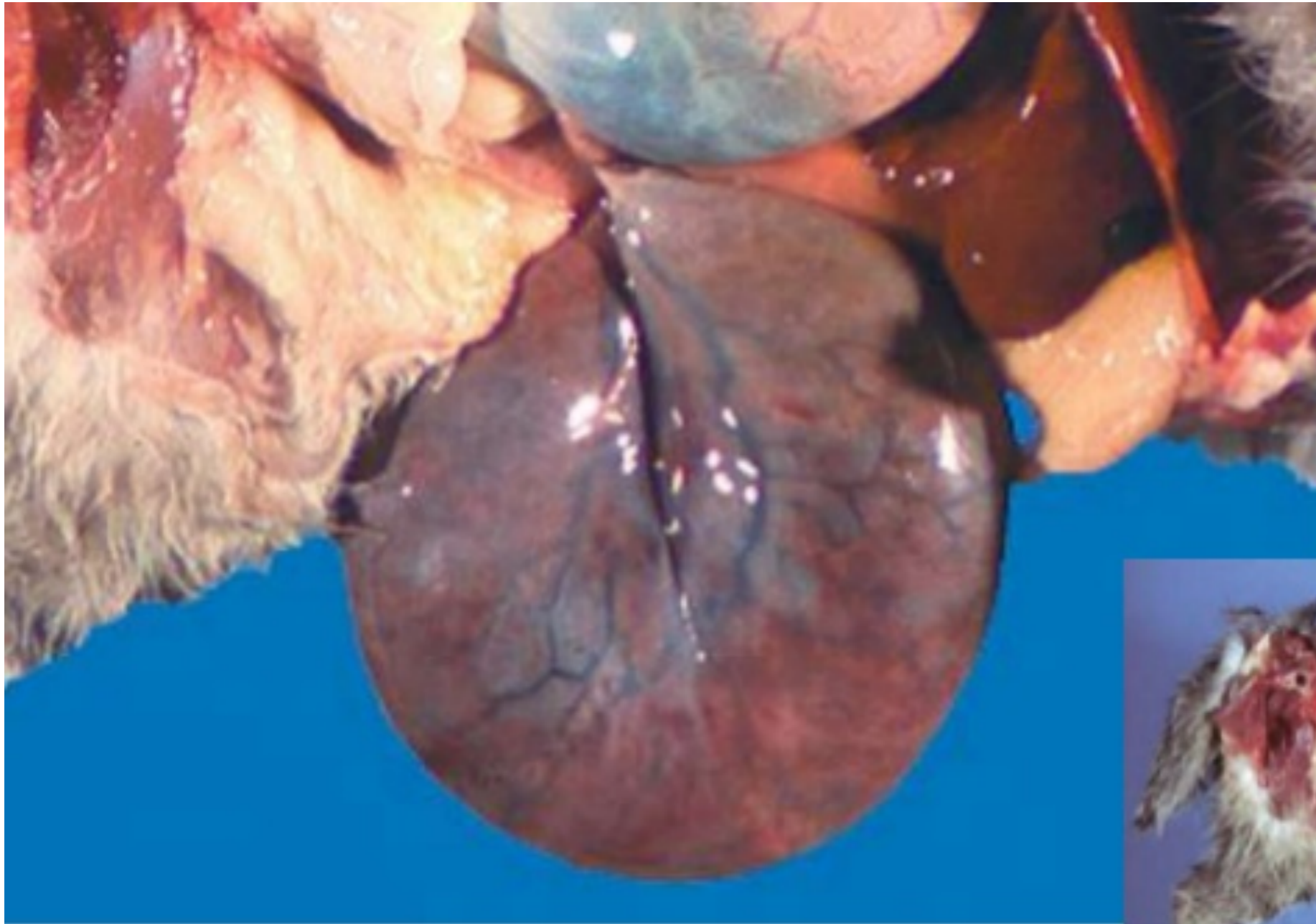


CAMBIAMENTO DI POSIZIONE

invaginamento e prolasso



torsione

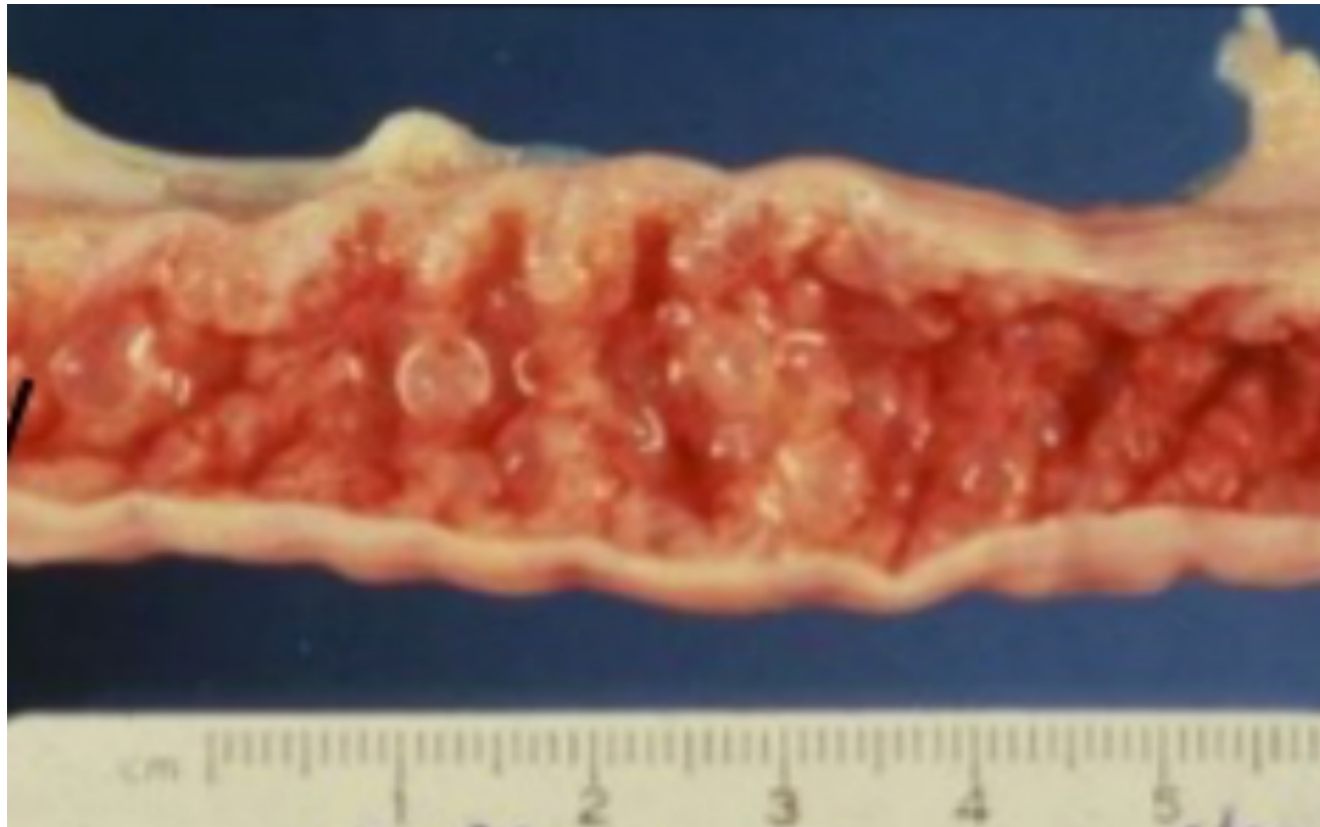


rottura



ATROFIA

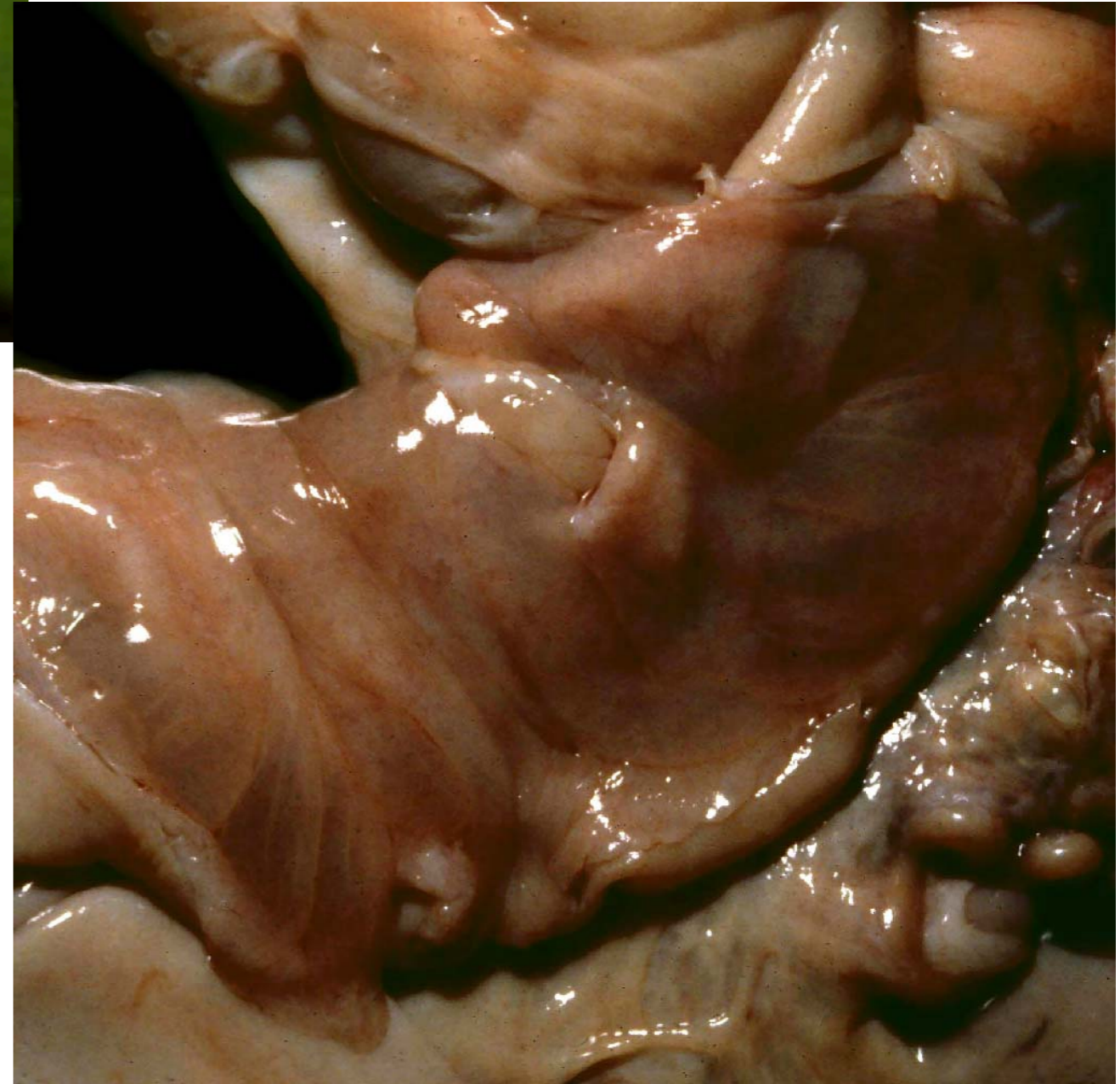
IPERPLASIA



IDROMETRA



MUCOMETRA



PROCESSI INFIAMMATORI

ENDOMETRITE CATARRALE



ENDOMETRITI CRONICHE

poliposa
cistica
atrofica
calcificante

ENDOMETRITE CATARRHALE-PURULENTA



ENDOMETRITIS PURULENTA

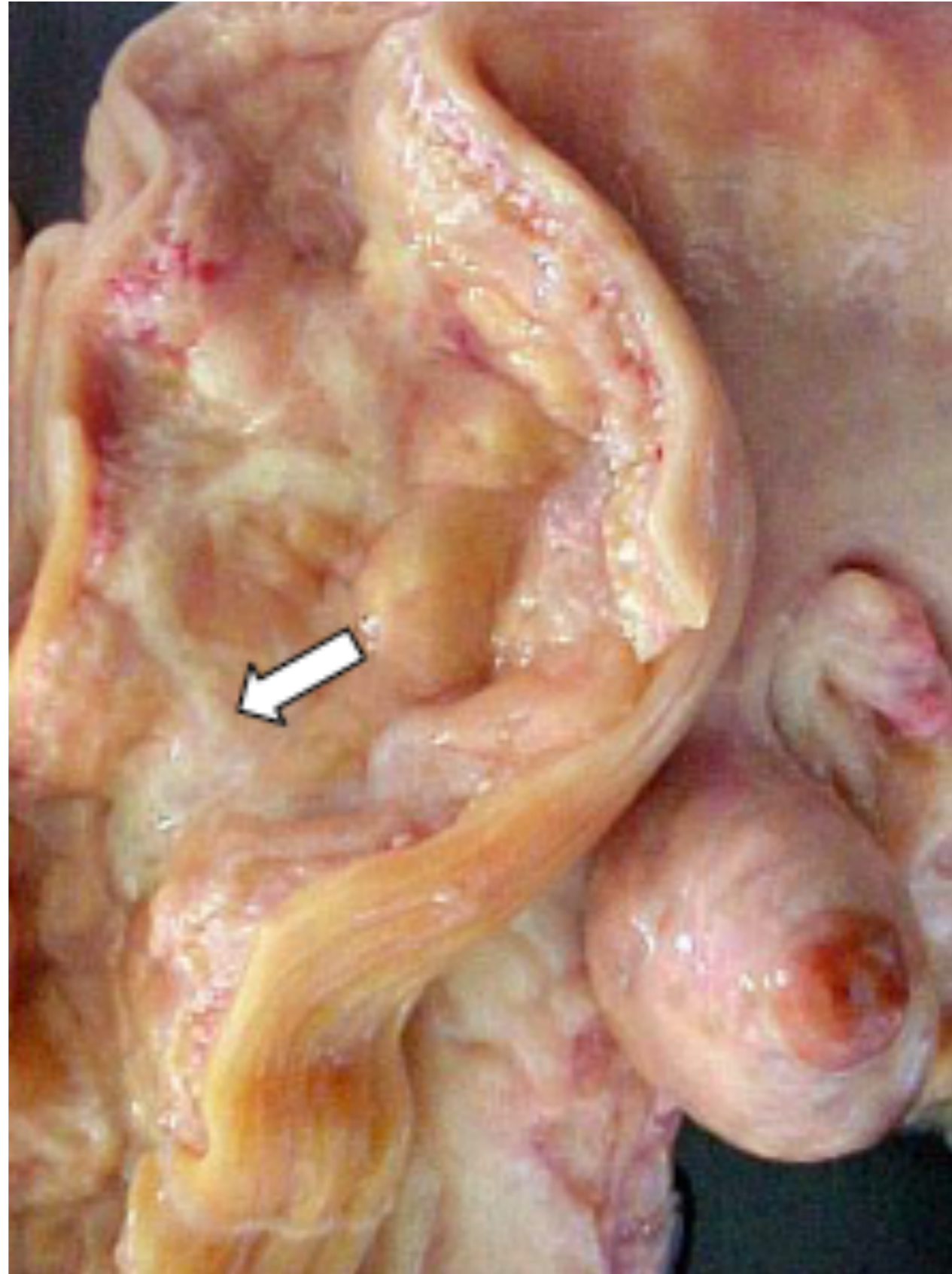
sempl
follicolare



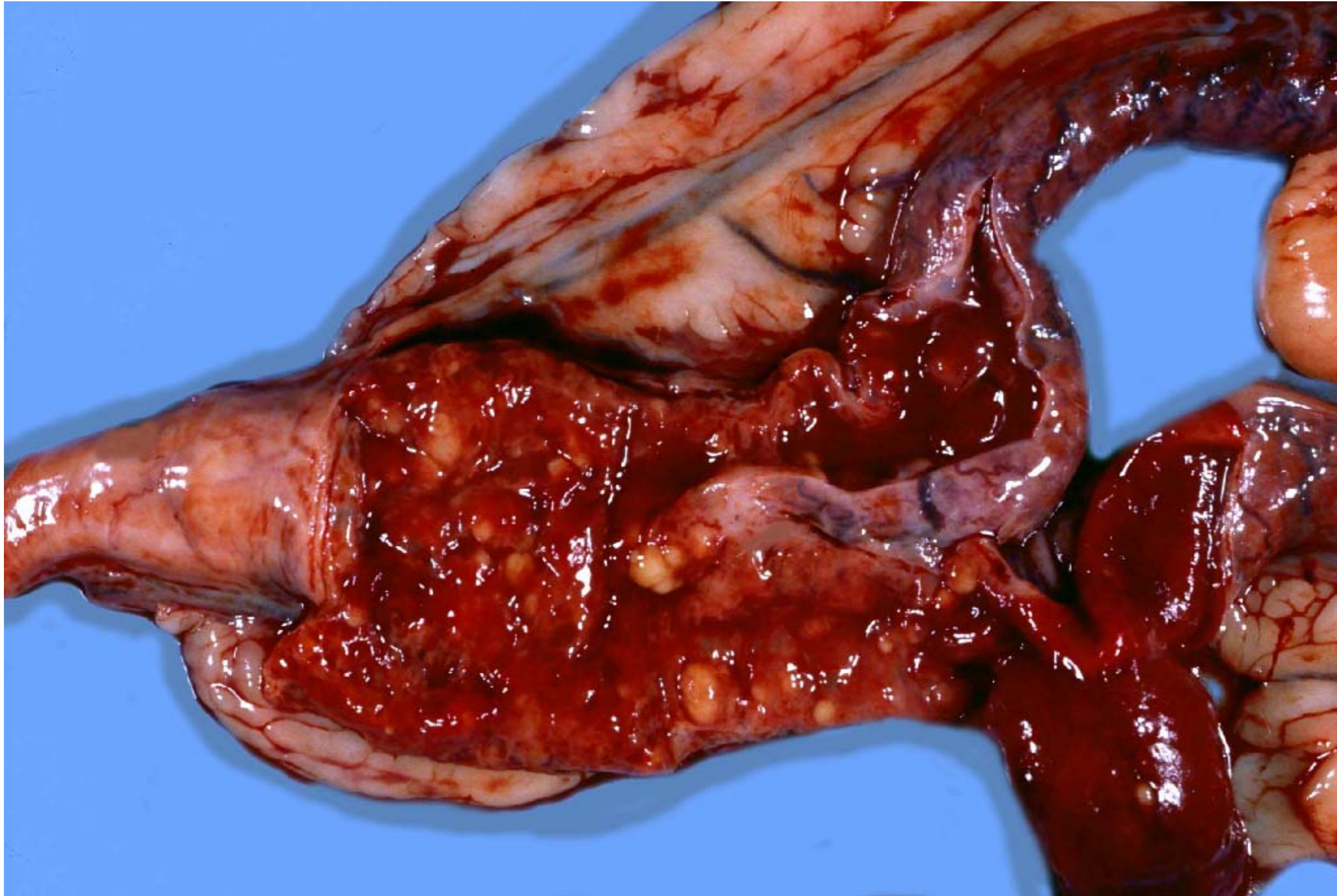
(c) 2012, Richard M. Jakowski, DVM, PhD, DACVP

ENDOMETRITE PURULENTA

semplice
follicolare



ENDOMETRITE PURULENTA EMORRAGICA



piometra



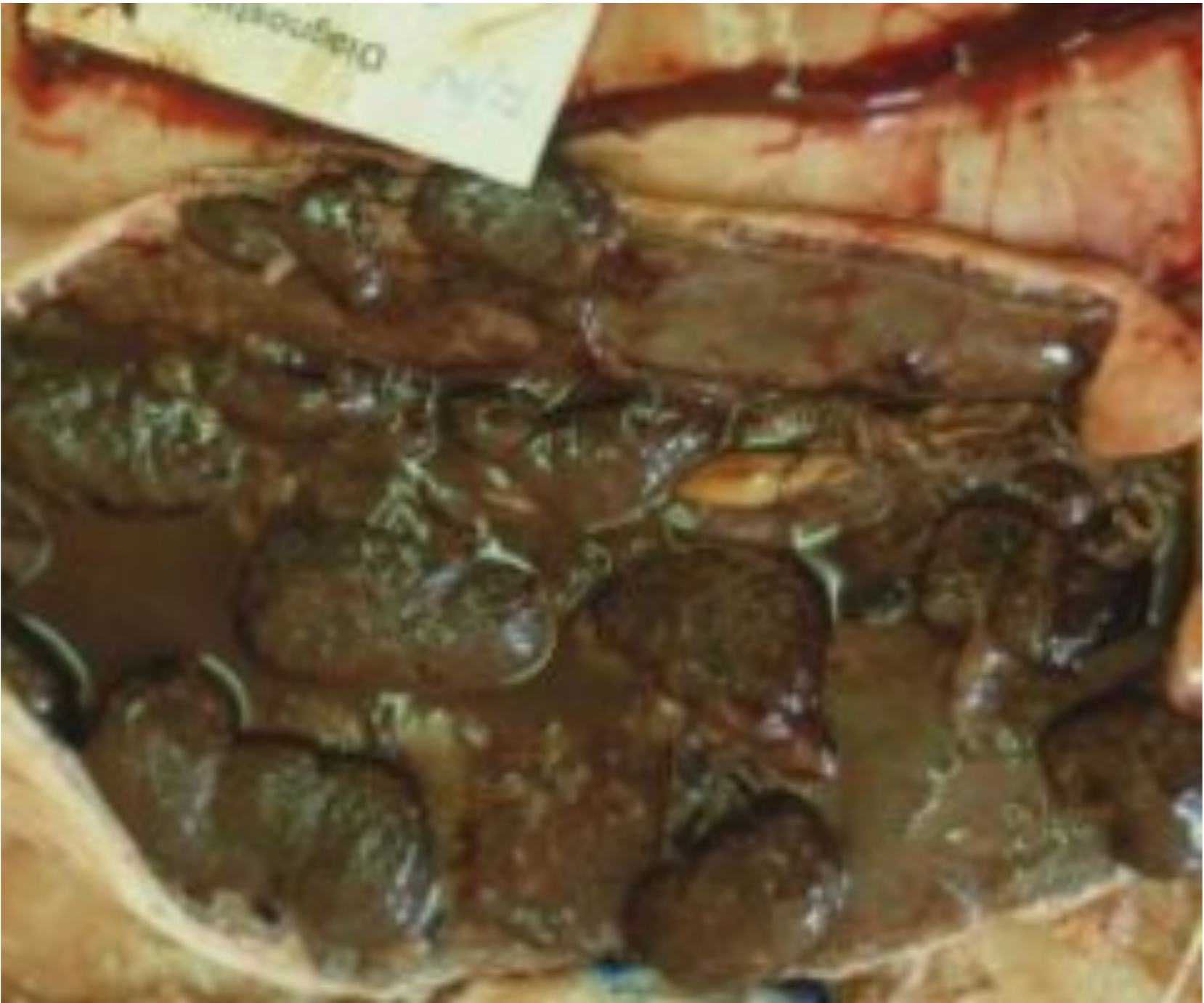
piometra



ENDOMETRITIS NECROTICA



ENDOMETRITIS GANGRENOSE O PUTRIDE

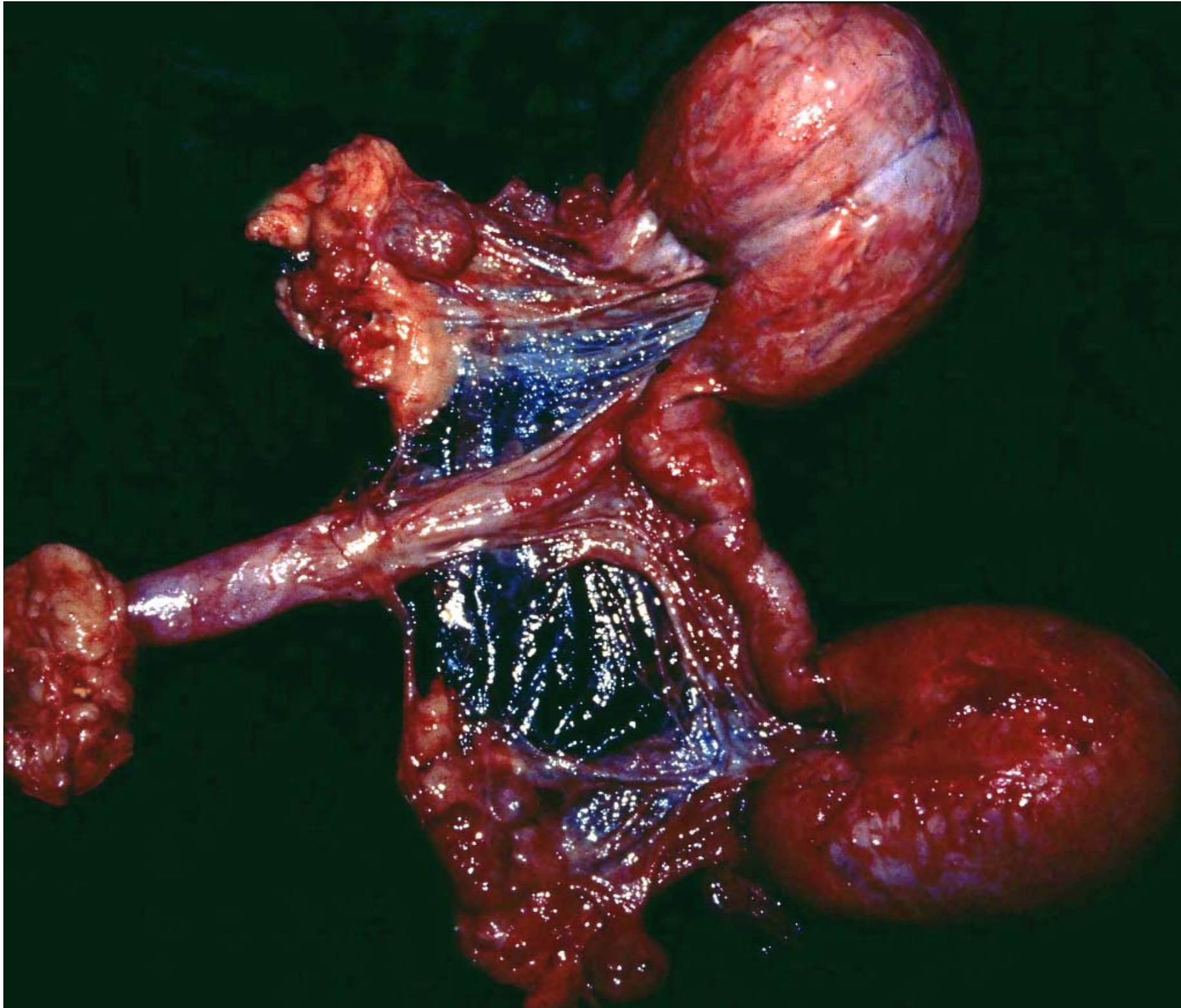


ENDOMETRITIS GANGRENOSE O PUTRIDE



ENDOMETRITE GANGRENOSE O PUTRIDE

FISIOMETRA



METRITE SETTICHE

M. settica semplice

M.fibrinosa

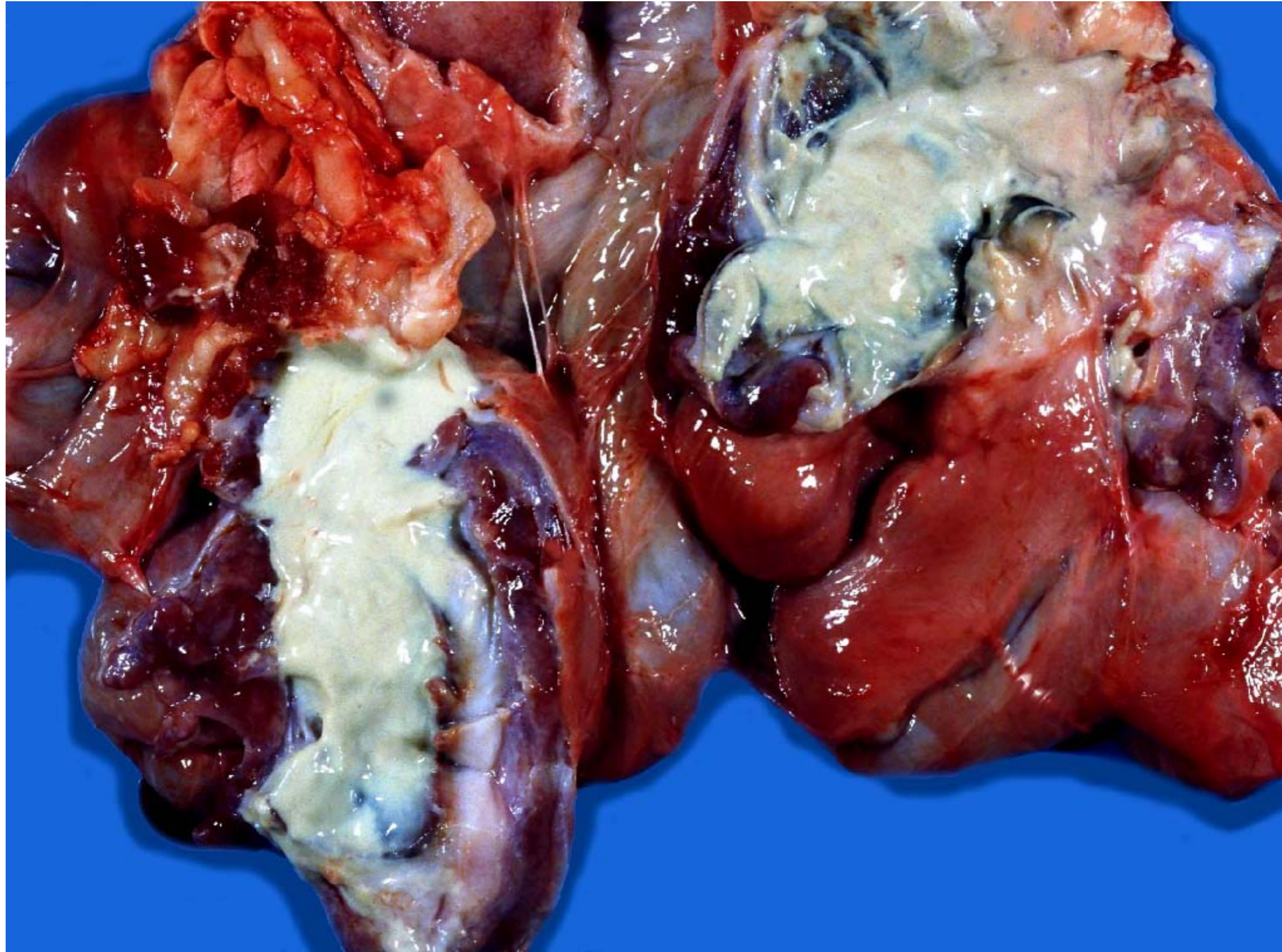
M.settica purulenta

M.settica necrotica

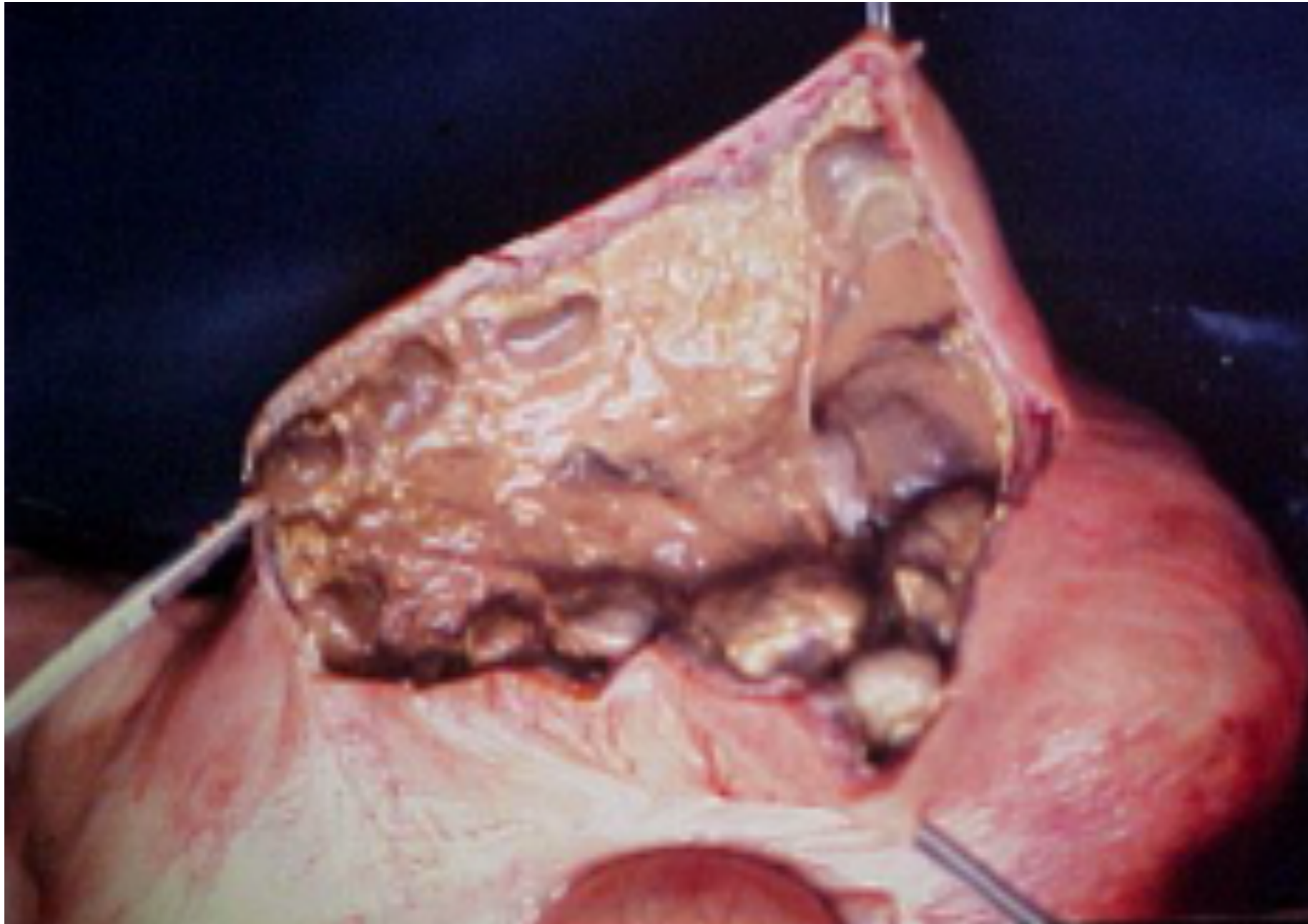
M.settica gangrenosa-icorosa

evoluzione in perimetritee peritonite,pioemia,setticemia

METRITE PURULENTA ICOROSA



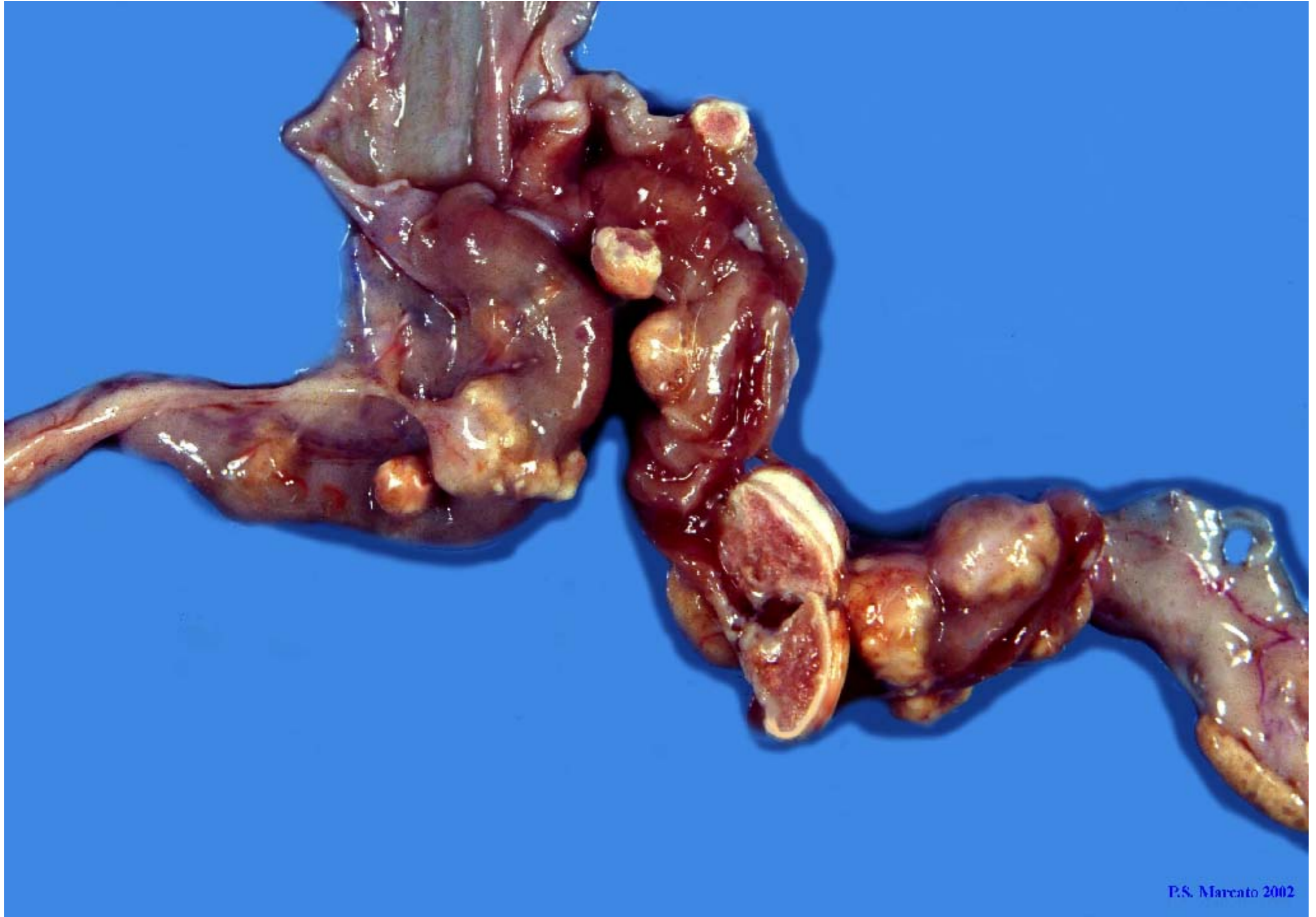
METRITE PURULENTA



METRITE PURULENTA



METRITE PURULENTA



ENDOMETRITE E METRITE GRANULOMATOSA

BRUCELLOSI

PSEUDOTUBERCOLOSI

TUBERCOLOSI

generalizzazione acuta precoce

generalizzazione protetta



TUBERCOLOSI

periodo post-primario

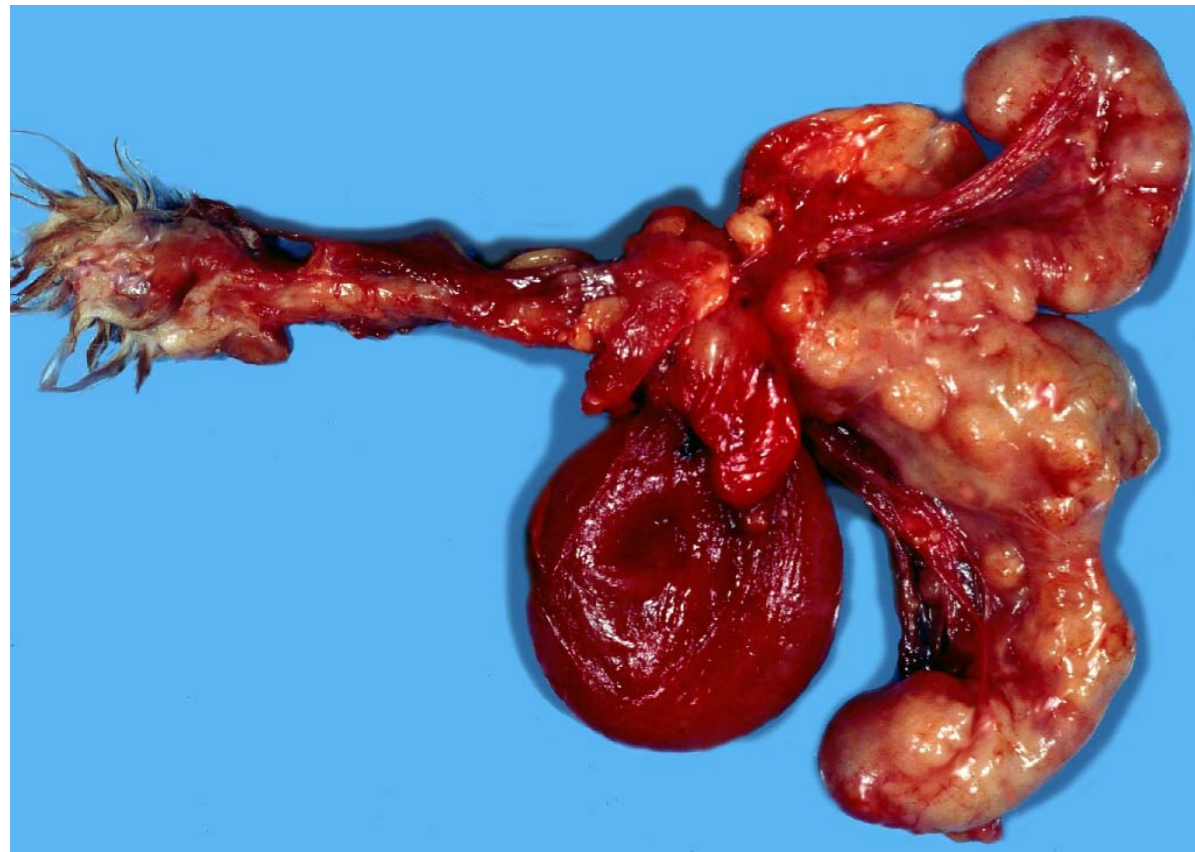
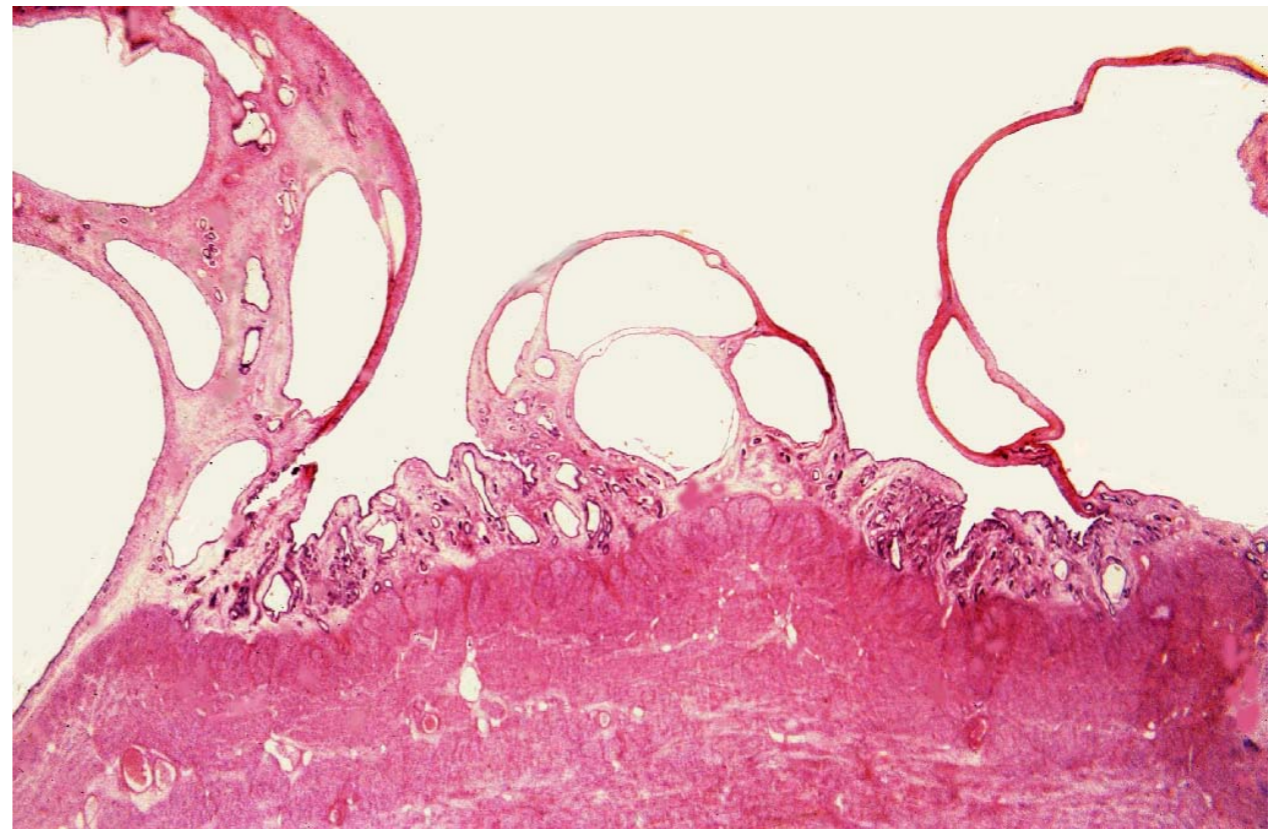
collasso delle resistenze

NEOPLASIE DELL'UTERO

EPITELIALI

polipi

adenomi



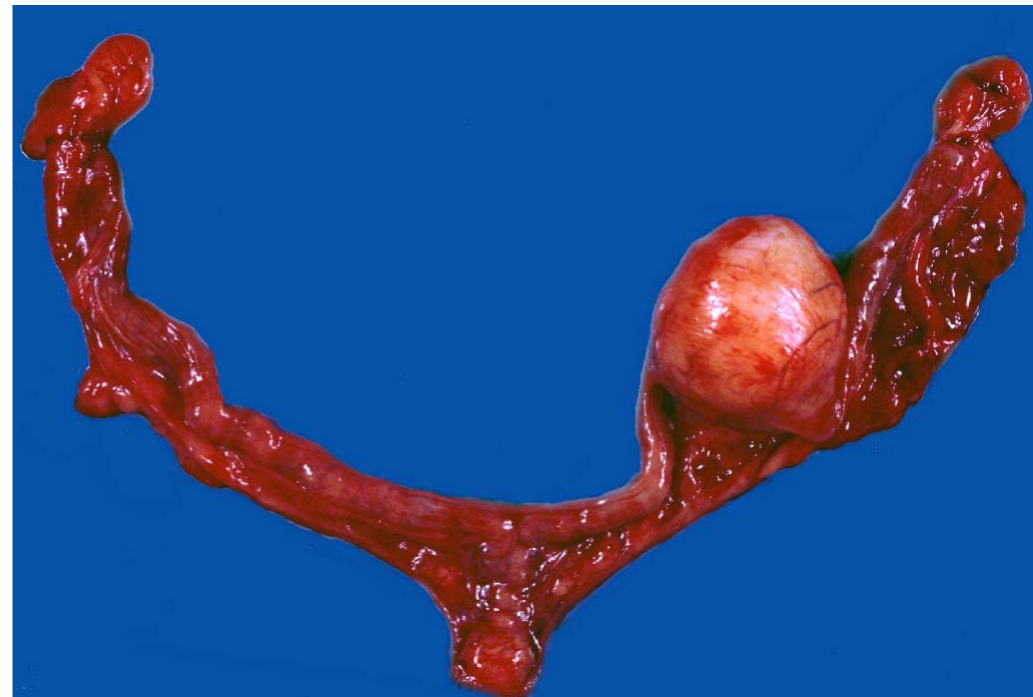
adenomicarcinomi

NEOPLASIE DELL'UTERO

MESENCHIMALI

Fibroma/fibrosarcoma

Leiomioma/leiomiosarcoma



Lipoma

NEOPLASIE DELL'UTERO

ASCESSO



LINFOMA



VAGINA

Vaginite catarrale



VAGINA

Vaginite necrotica



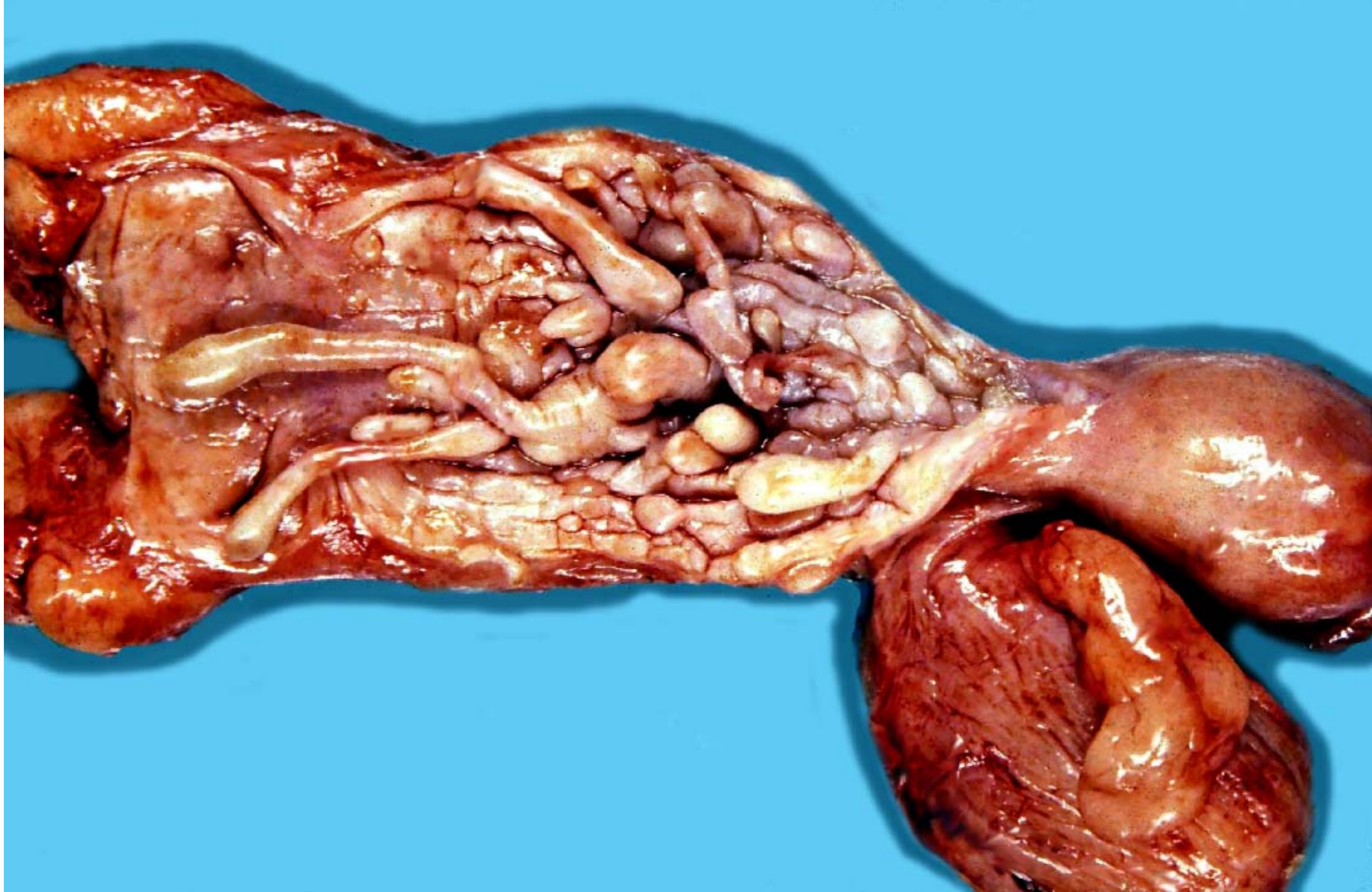
VAGINA

Vaginite herpesvirus



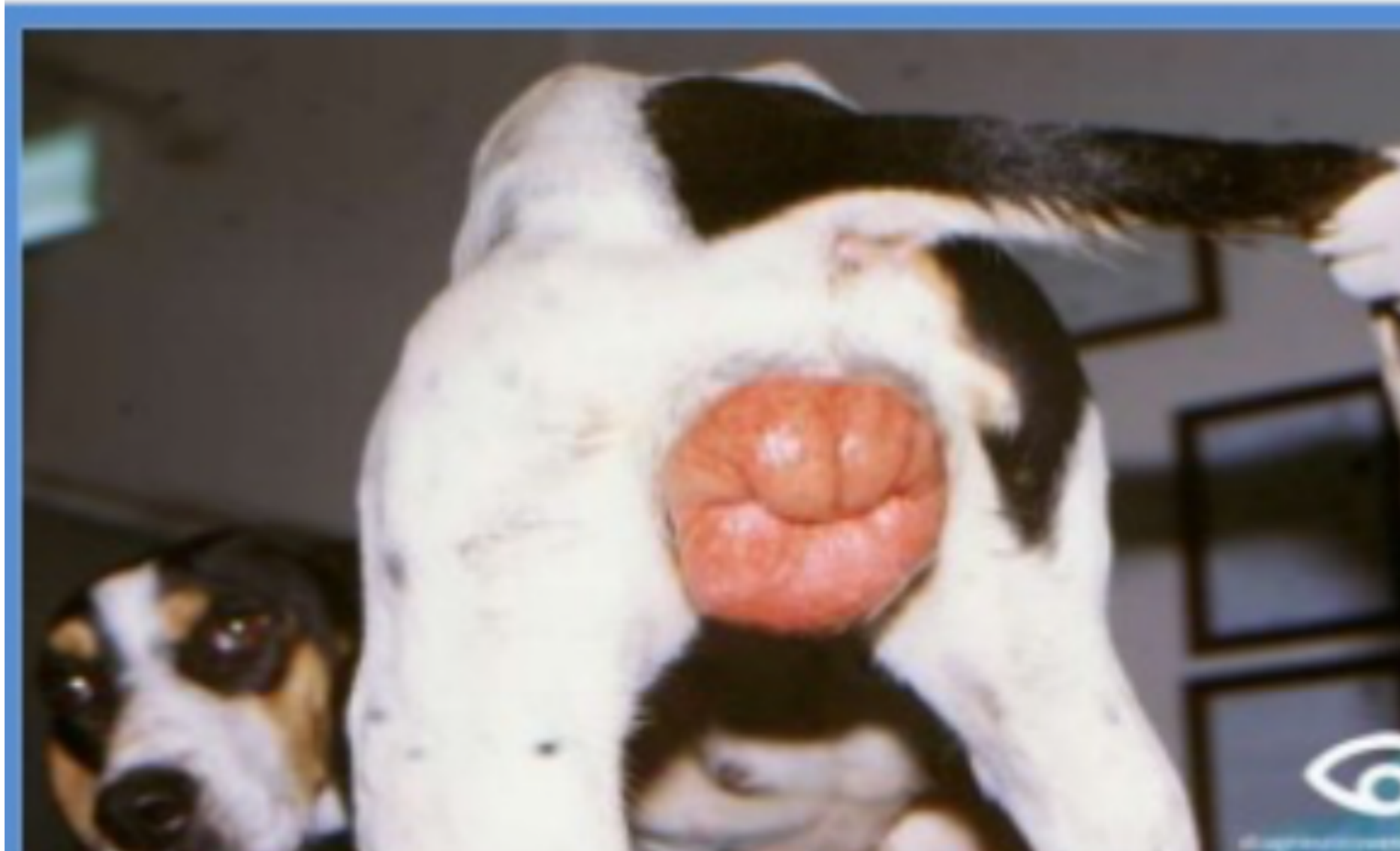
VAGINA

Vaginite crónica
papilomatosa



VAGINA

PROLASSO VAGINALE



VAGINA

LEOMIOMA



VAGINA

tumore di sticker

